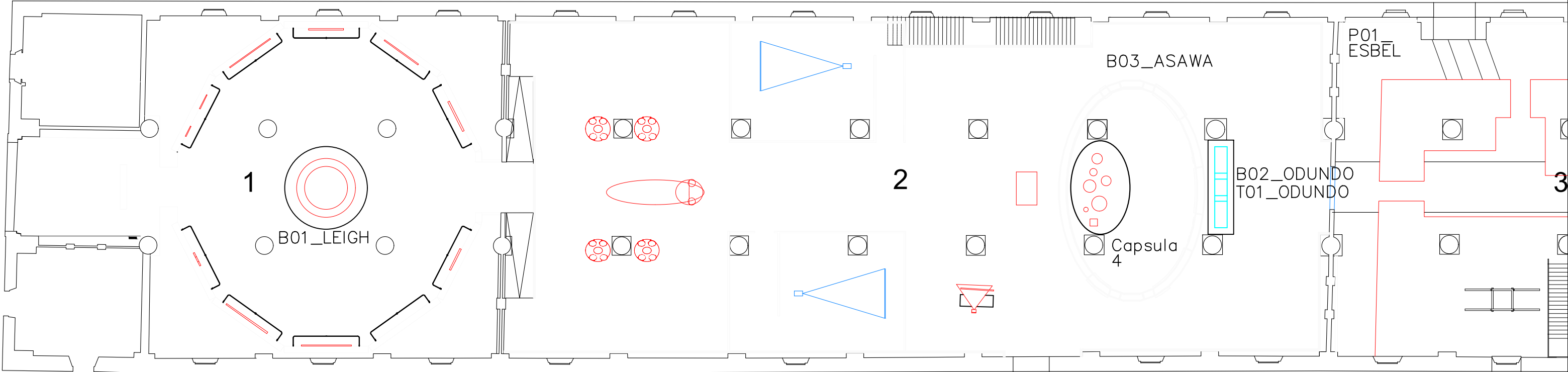
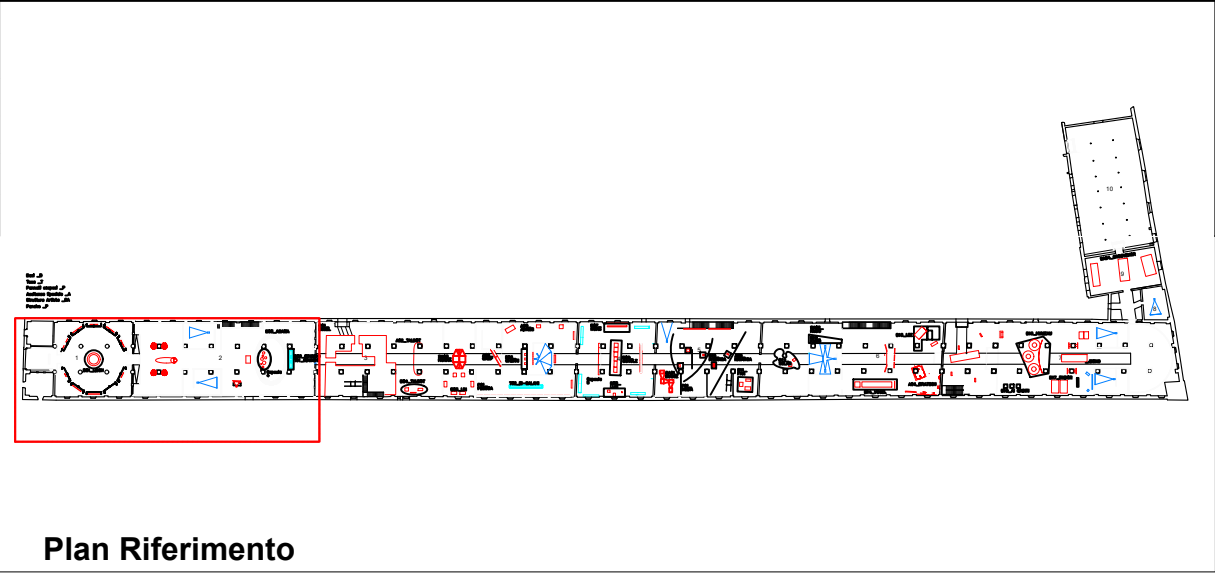
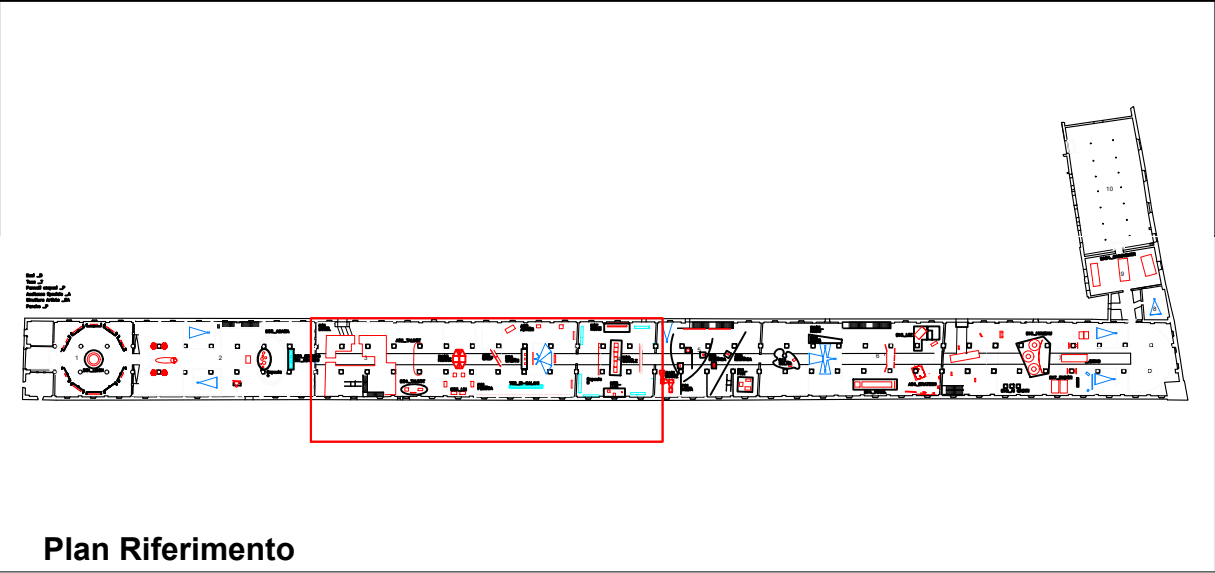


| | | | | | |
|-------------------------------------|--|-----------|----------|-----------|--------------|
| DIRETTORE SERVIZI TECNICO LOGISTICI | | COMMESSA | DATA | REDAZIONE | APPROVAZIONE |
| ing Cristiano Frizzele | Fondazione La Biennale di Venezia | | 27_01_22 | FAF | |
| REDAZIONE | OGGETTO | TAVOLA | | | |
| | ARSENALE_59EIA_Planimetria generale | 01 | | | |
| | LOCALIZZAZIONE | SCALA | | | |
| | ARSENALE | | | | |

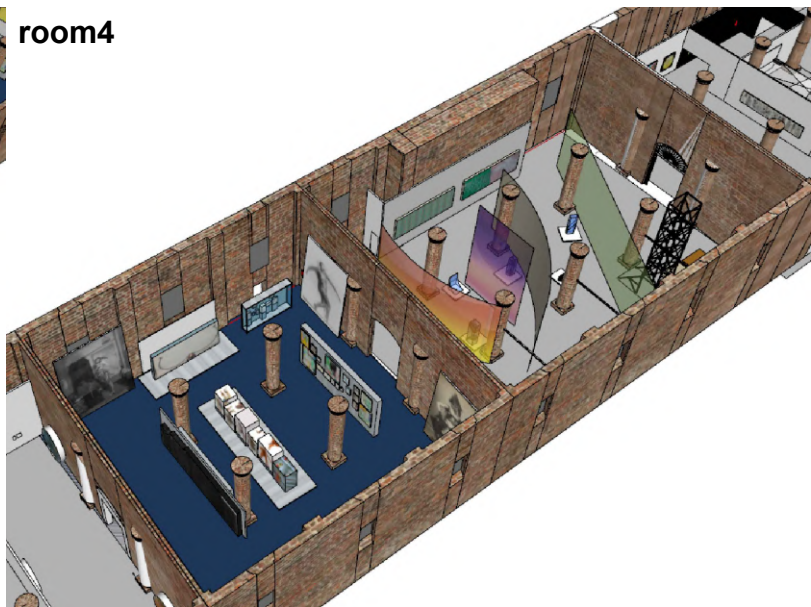
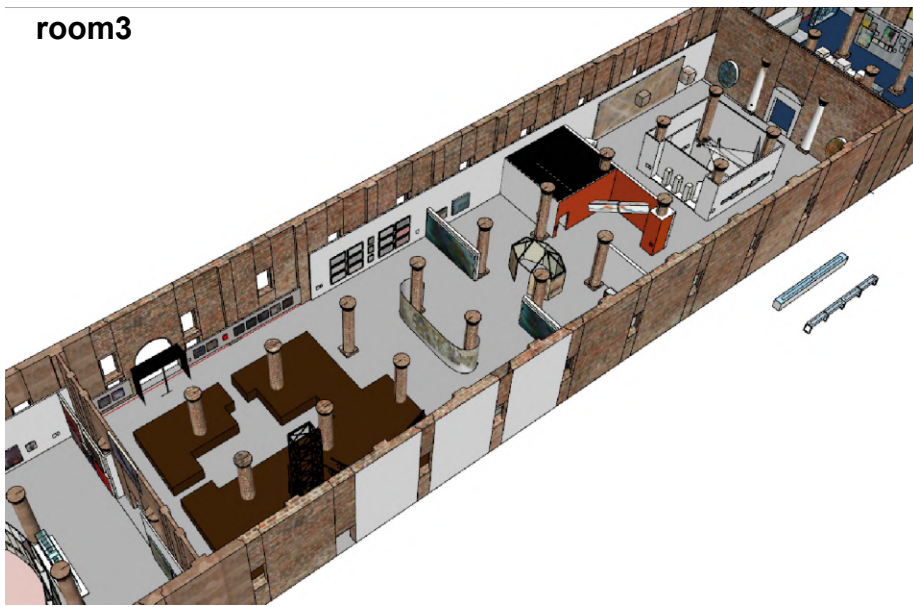
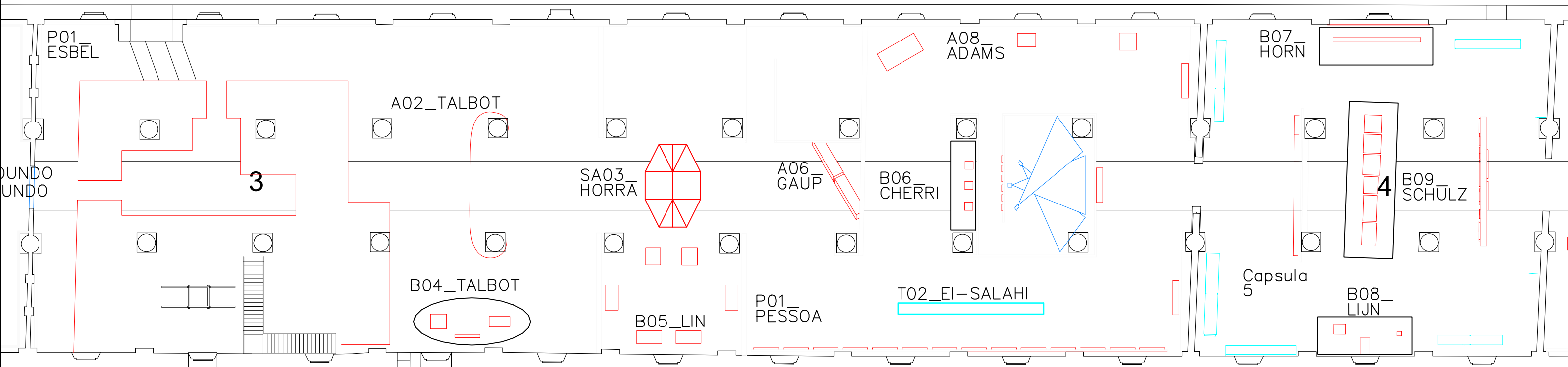
- Basi _B
- Teca _T
- Pannelli sospesi _P
- Assistenza Speciale _A
- Struttura Artista _SA
- Panche _P



| | | | | | |
|-------------------------------------|--|------------|----------|-----------|--------------|
| DIRETTORE SERVIZI TECNICO LOGISTICI | | COMMESSA | DATA | REDAZIONE | APPROVAZIONE |
| ing Cristiano Frizzele | Fondazione La Biennale di Venezia | | 27_01_22 | FAF | |
| REDAZIONE | OGGETTO | TAVOLA | | | |
| | ARSENALE_59EIA_Planimetria generale | 01a | | | |
| | LOCALIZZAZIONE | SCALA | | | |
| | ARSENALE | | | | |

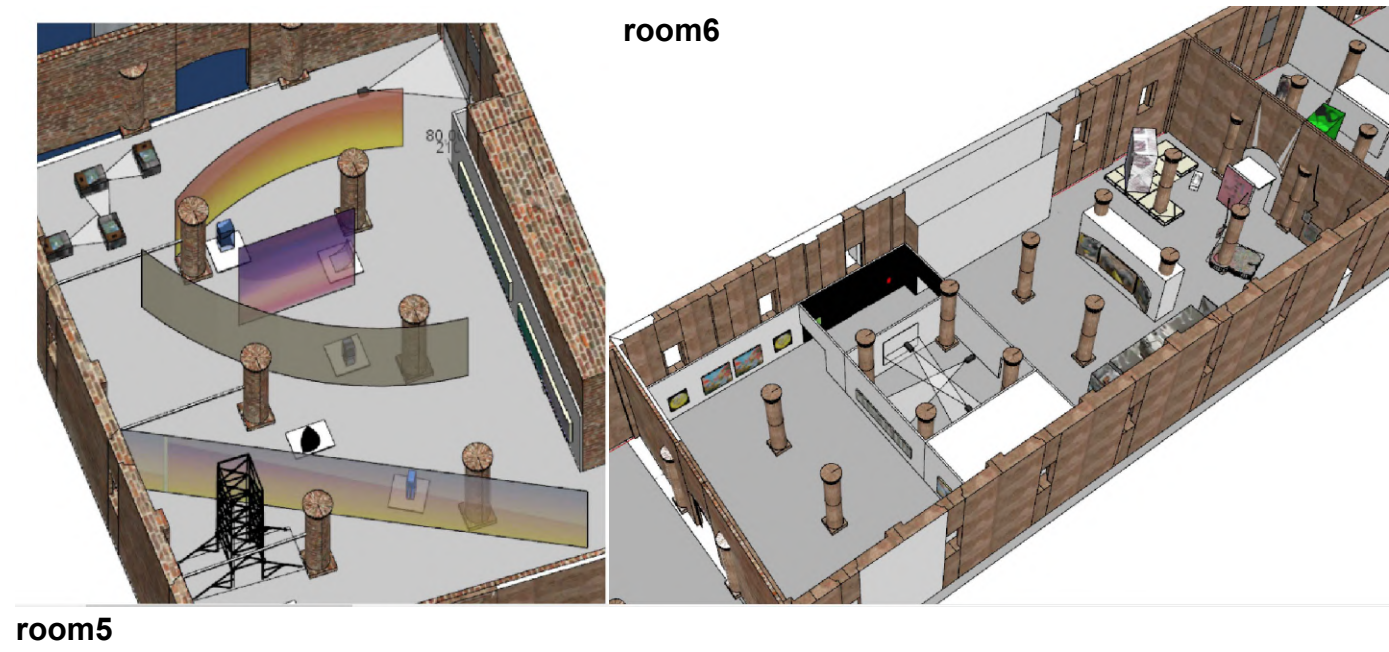
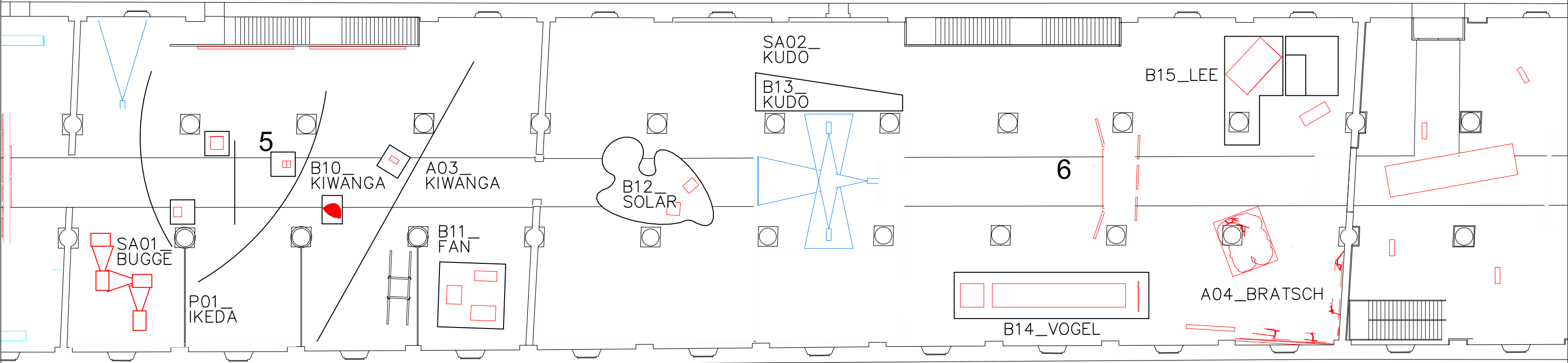
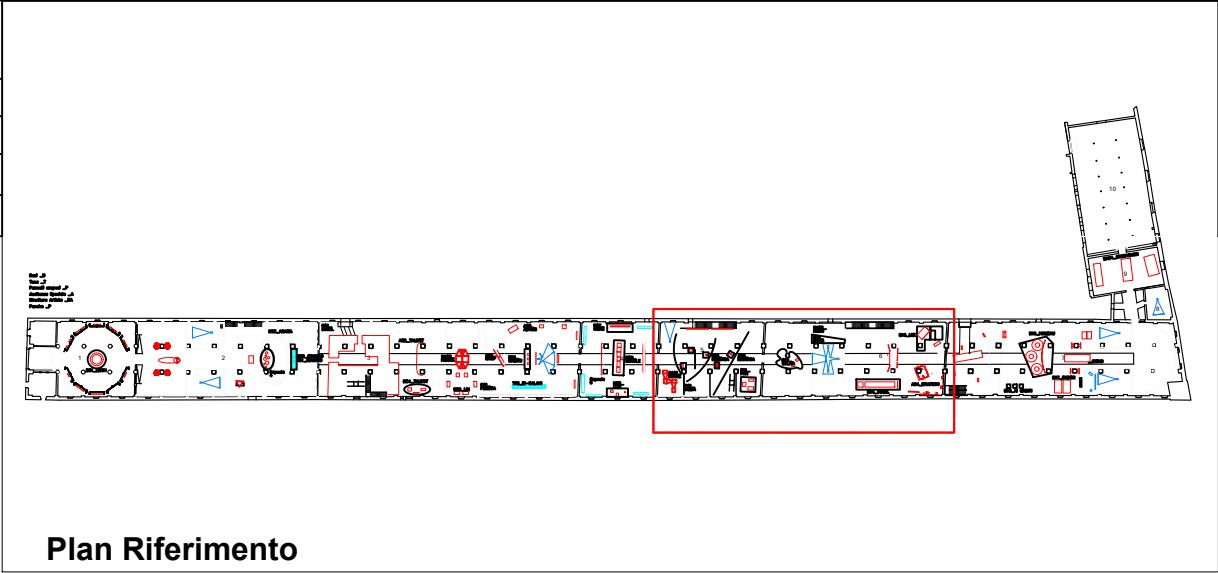


- Basi _B
- Teca _T
- Pannelli sospesi _P
- Assistenza Speciale _A
- Struttura Artista _SA
- Panche _P



| | | | | | | |
|-------------------------------------|------------------------|--|----------|----------|-----------|--------------|
| DIRETTORE SERVIZI TECNICO LOGISTICI | ing Cristiano Frizzele | Fondazione La Biennale di Venezia | COMMESSA | DATA | REDAZIONE | APPROVAZIONE |
| REDAZIONE | OGGETTO | ARSENALE_59EIA_Planimetria generale | TAVOLA | 27_01_22 | FAF | |
| | LOCALIZZAZIONE | ARSENALE | SCALA | | | |

Basi _B
 Teca _T
 Pannelli sospesi _P
 Assistenza Speciale _A
 Struttura Artista _SA
 Panche _P

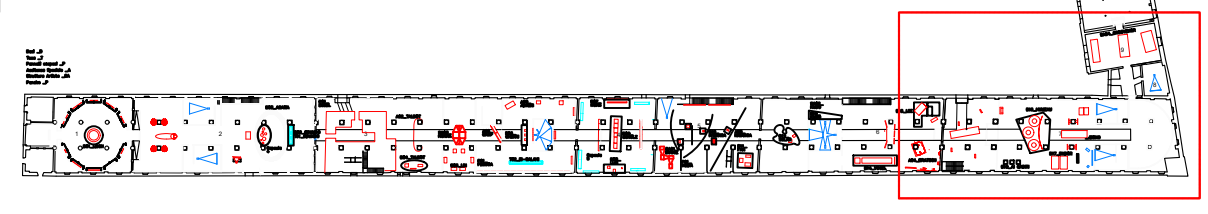


| | | | | | |
|-------------------------------------|--|------------|----------|-----------|--------------|
| DIRETTORE SERVIZI TECNICO LOGISTICI | | COMMESSA | DATA | REDAZIONE | APPROVAZIONE |
| ing Cristiano Frizzele | Fondazione La Biennale di Venezia | | 27_01_22 | FAF | |
| REDAZIONE | OGGETTO | TAVOLA | | | |
| | ARSENALE_59EIA_Planimetria generale | 01c | | | |
| | LOCALIZZAZIONE | SCALA | | | |
| | ARSENALE | | | | |

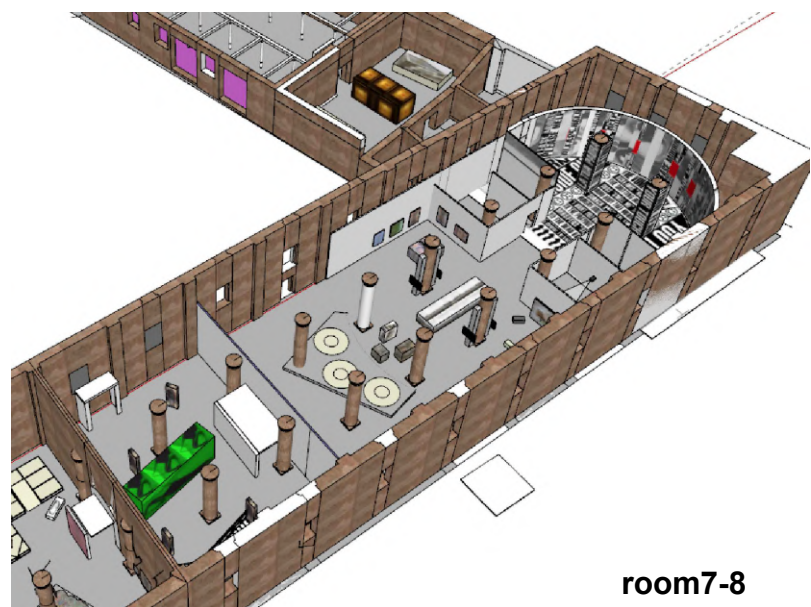
la Biennale di Venezia

Arte
Architettura
Cinema
Danza
Musica
Teatro
Archivio Storico

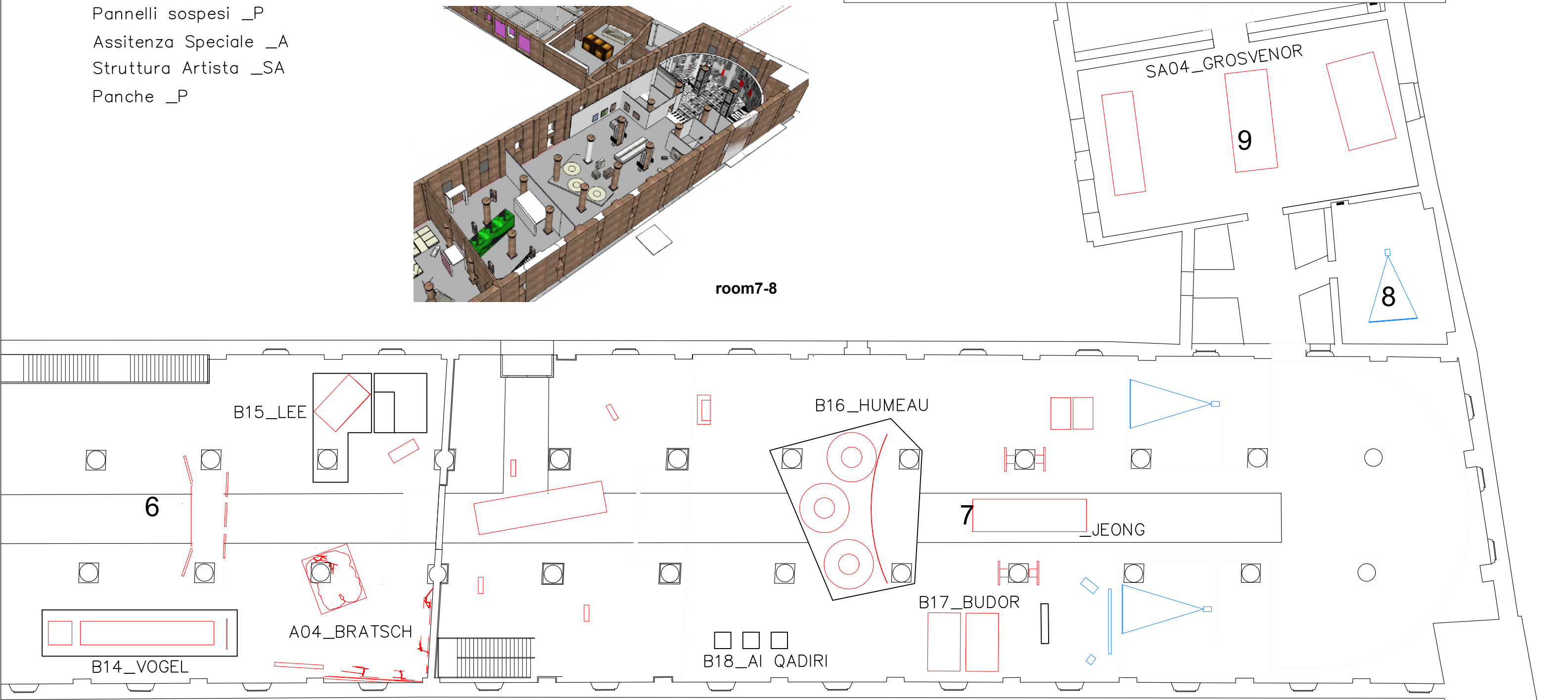
Plan Riferimento



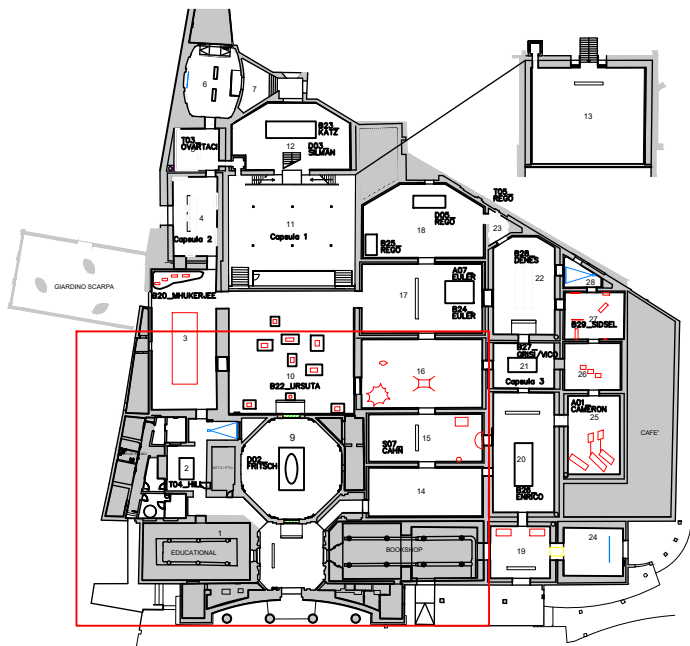
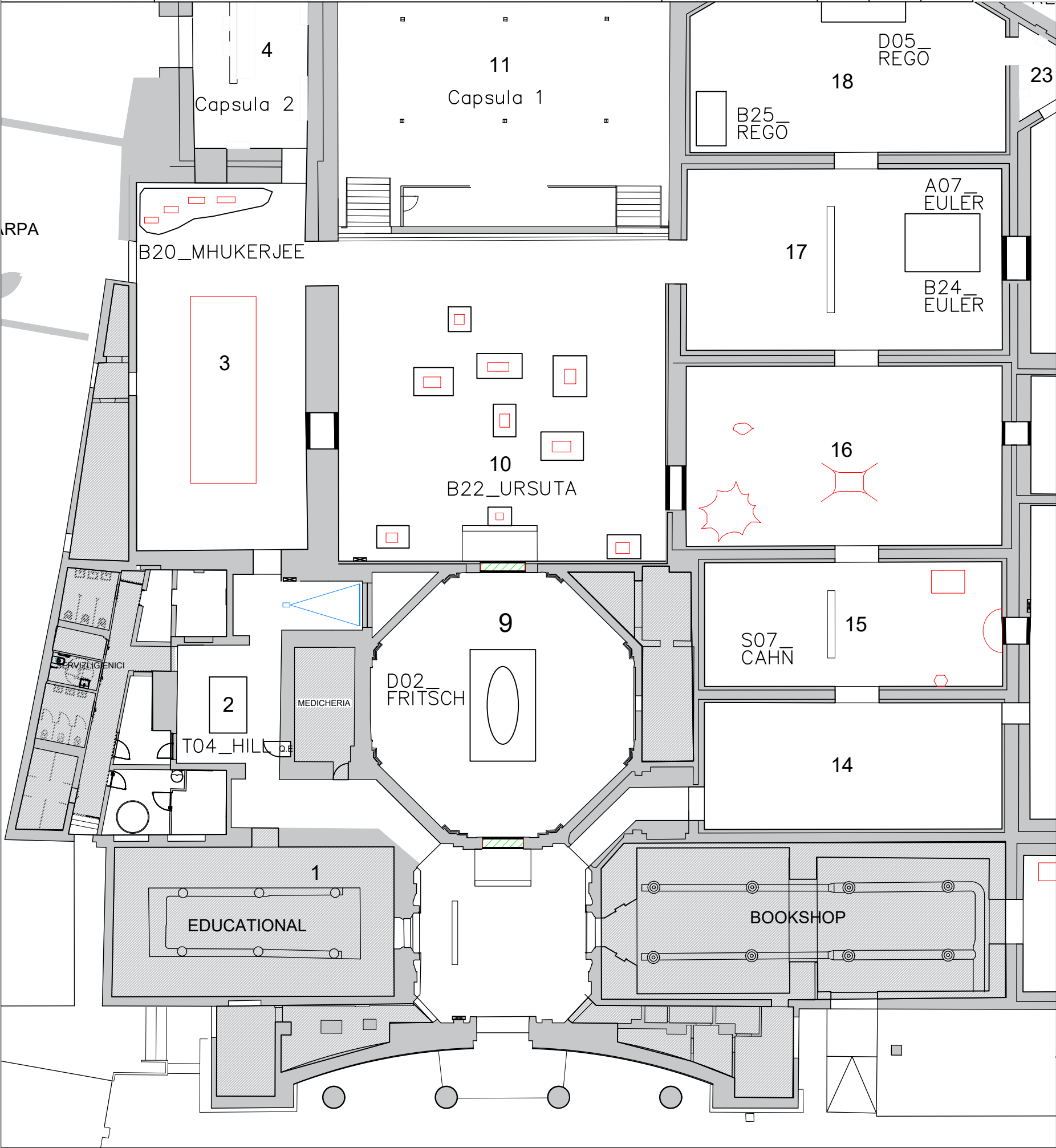
- Basi _B
- Teca _T
- Pannelli sospesi _P
- Assistenza Speciale _A
- Struttura Artista _SA
- Panche _P



room7-8



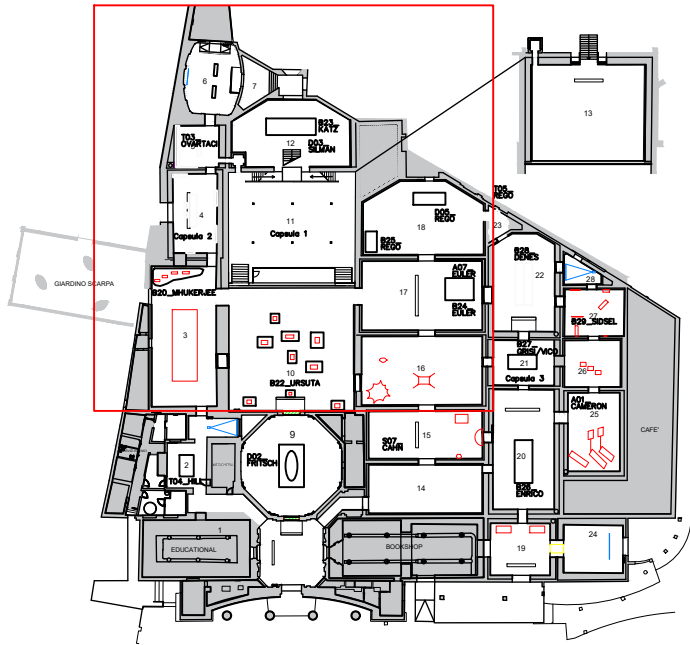
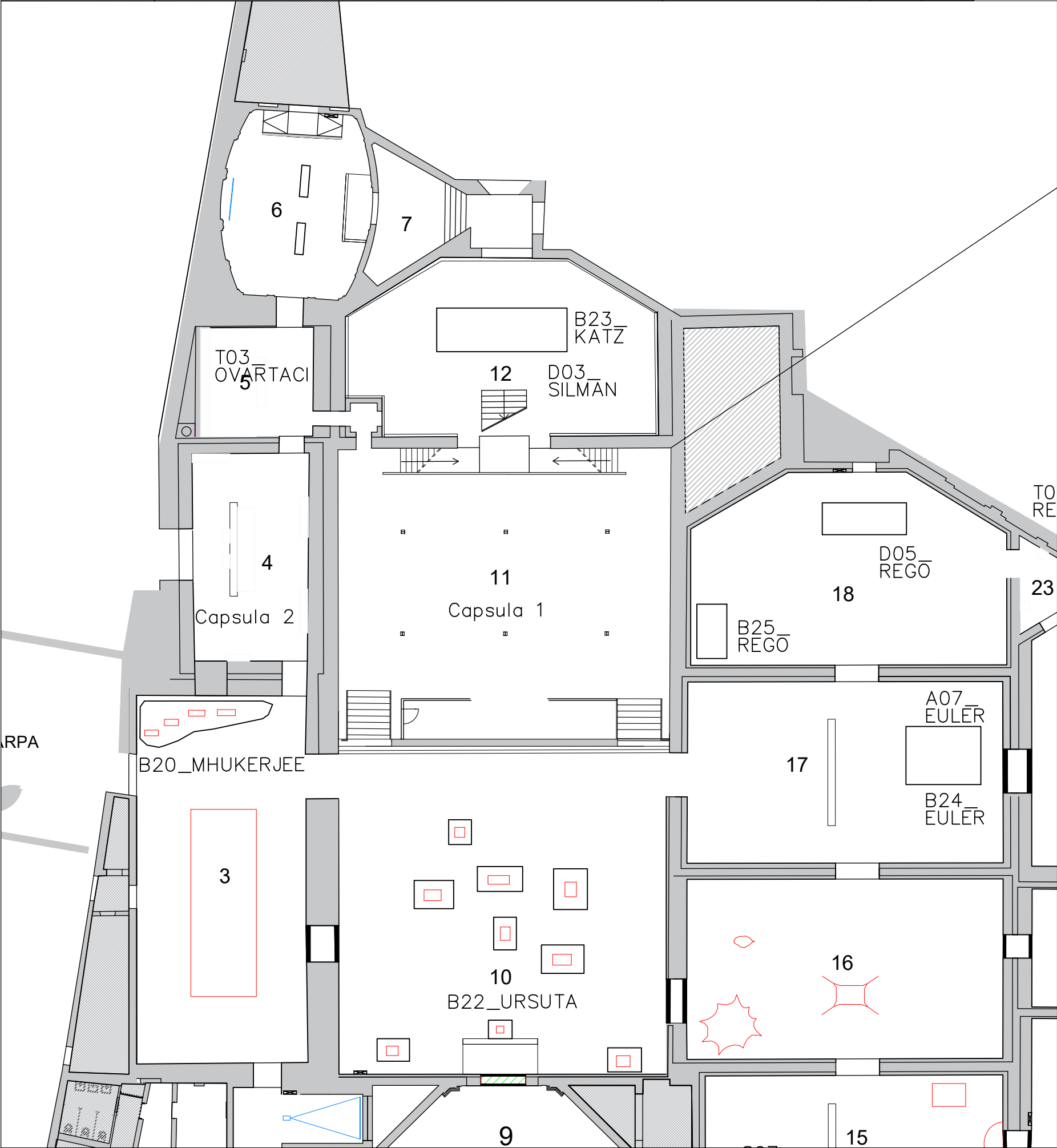
| | | | | | | |
|-------------------------------------|------------------------|--|----------|----------|-----------|--------------|
| DIRETTORE SERVIZI TECNICO LOGISTICI | ing Cristiano Frizzele | Fondazione La Biennale di Venezia | COMMESSA | DATA | REDAZIONE | APPROVAZIONE |
| REDAZIONE | OGGETTO | PAD CENTRALE_59EIA_planimetria generale | TAVOLA | 27_01_22 | FAF | |
| | LOCALIZZAZIONE | PAD CENTRALE | SCALA | | | |



Plan Riferimento

- Basi _B
- Teca _T
- Pannelli sospesi _P
- Assistenza Speciale _A
- Struttura Artista _SA
- Panche _P

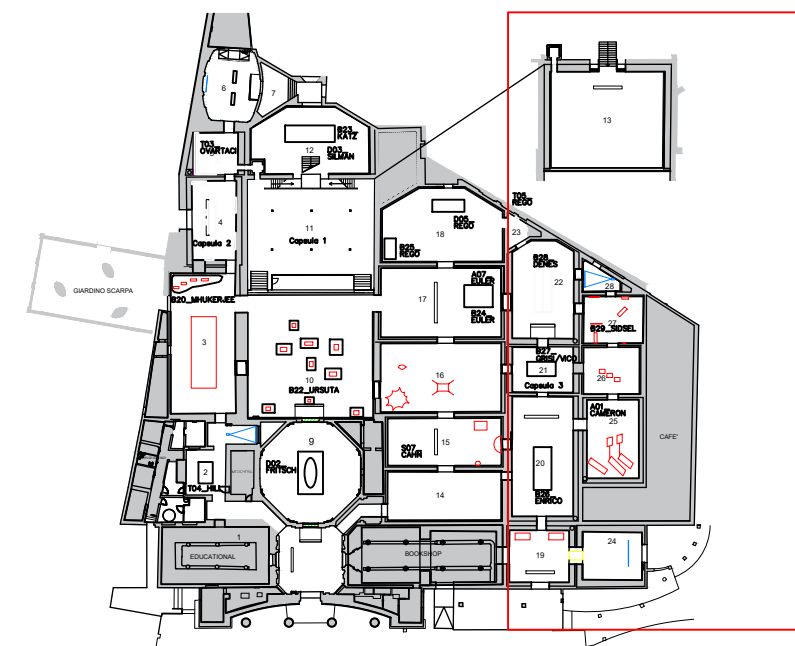
| | | | | | |
|-------------------------------------|--|------------|----------|-----------|--------------|
| DIRETTORE SERVIZI TECNICO LOGISTICI | | COMMESSA | DATA | REDAZIONE | APPROVAZIONE |
| ing Cristiano Frizzele | Fondazione La Biennale di Venezia | | 27_01_22 | FAF | |
| REDAZIONE | OGGETTO | TAVOLA | | | |
| | PAD CENTRALE_59EIA_planimetria generale | 02a | | | |
| | LOCALIZZAZIONE | SCALA | | | |
| | PAD CENTRALE | | | | |



Plan Riferimento

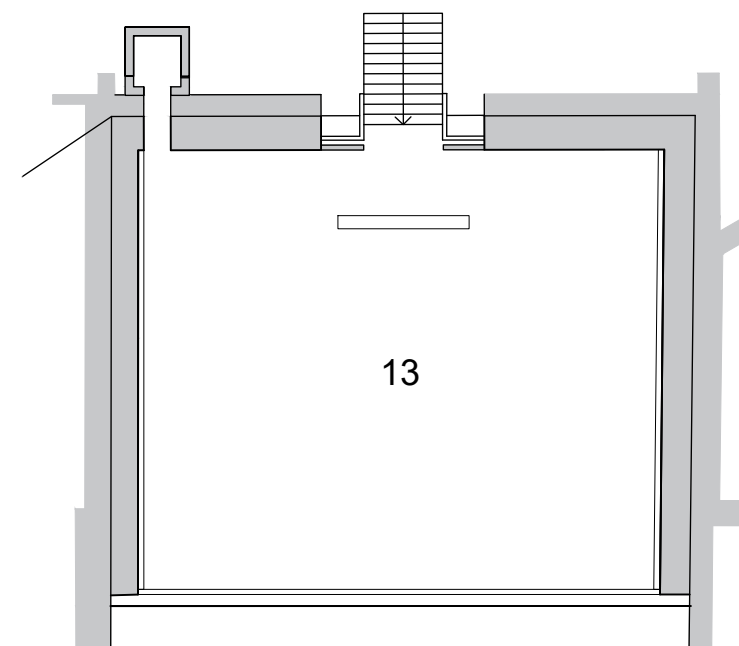
- Basi _B
- Teca _T
- Pannelli sospesi _P
- Assistenza Speciale _A
- Struttura Artista _SA
- Panche _P

| | | | | | | |
|-------------------------------------|------------------------|--|----------|----------|-----------|--------------|
| DIRETTORE SERVIZI TECNICO LOGISTICI | ing Cristiano Frizzele | Fondazione La Biennale di Venezia | COMMESSA | DATA | REDAZIONE | APPROVAZIONE |
| REDAZIONE | OGGETTO | PAD CENTRALE_59EIA_planimetria generale | TAVOLA | 27_01_22 | FAF | |
| | LOCALIZZAZIONE | PAD CENTRALE | SCALA | | | |

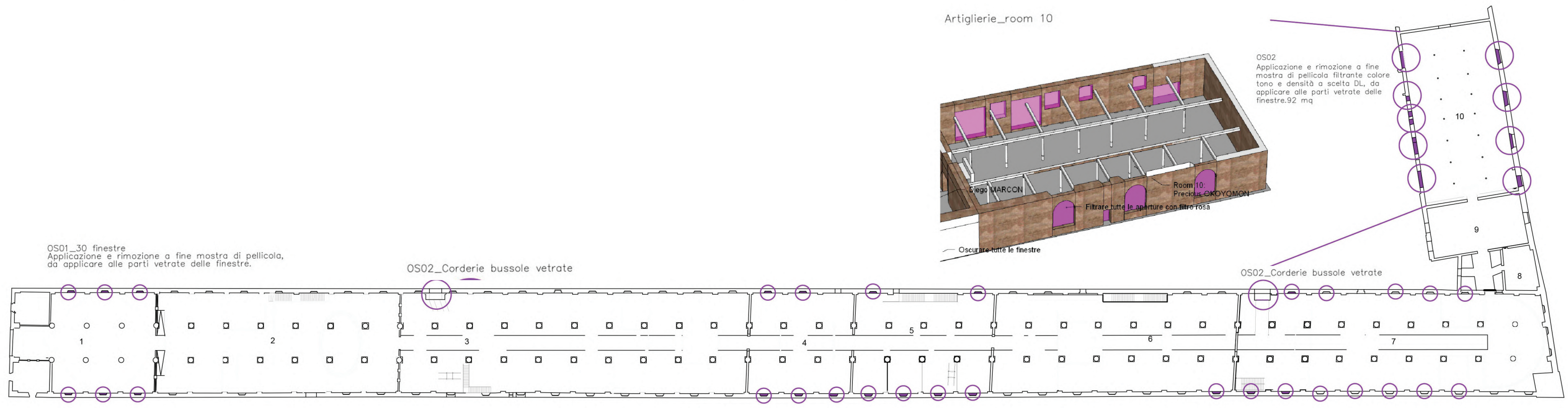


Plan Riferimento

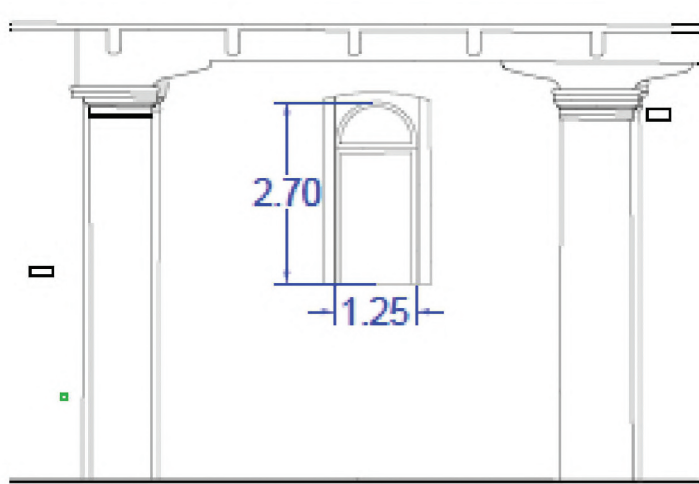
- Basi _B
- Teca _T
- Pannelli sospesi _P
- Assistenza Speciale _A
- Struttura Artista _SA
- Panche _P



| | | | | | | |
|-------------------------------------|------------------------|--|----------|----------|-----------|--------------|
| DIRETTORE SERVIZI TECNICO LOGISTICI | ing Cristiano Frizzele | Fondazione La Biennale di Venezia | COMMESSA | DATA | REDAZIONE | APPROVAZIONE |
| REDAZIONE | OGGETTO | Arsenale_Corderie_Artiglierie_Oscuramenti | TAVOLA | 31_01_22 | FAF | |
| | LOCALIZZAZIONE | Arsenale | SCALA | | | |



Corderie

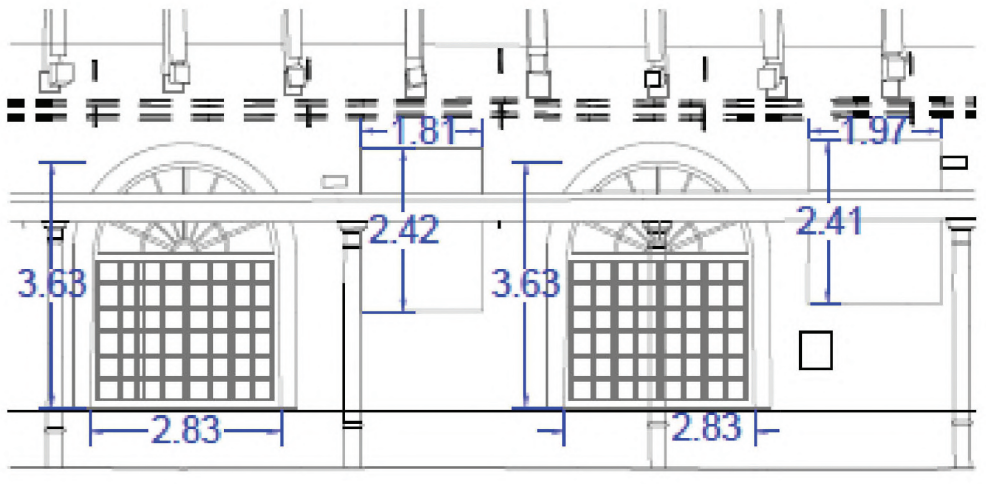


Corderie_finestra tipo



Corderie_finestra tipo_foto1

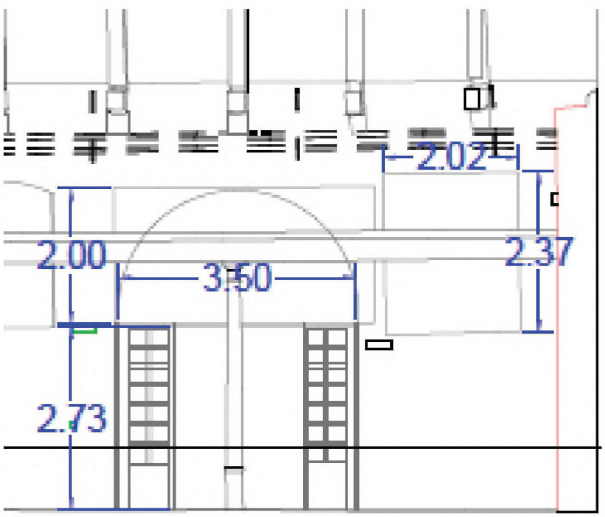
Artiglierie



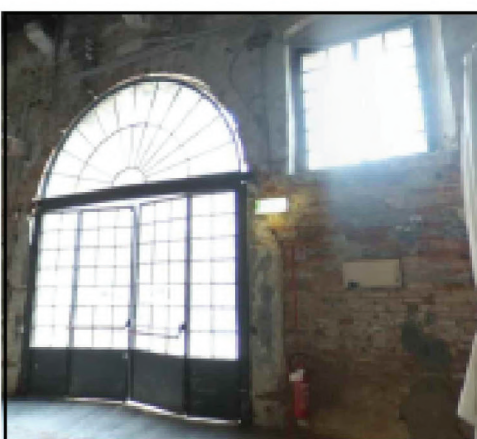
Artiglierie_lato A_fineste



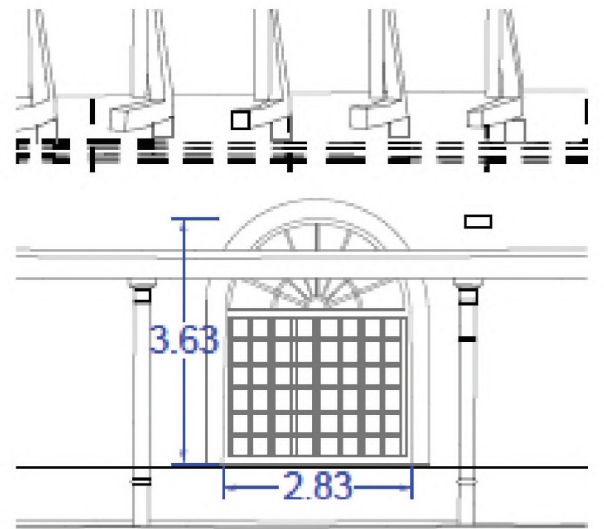
Artiglierie_lato A_foto2



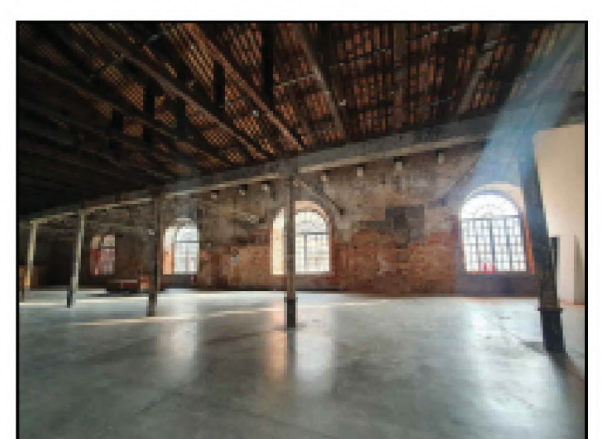
Artiglierie_lato A_porta d'ingresso



Artiglierie_lato A_foto3



Artiglierie_lato B_finestra tipo



| | | | | | | | | |
|-------------------------------------|------------------------|-----------------------------------|----------|-----------|----------|-----------|-----|--------------|
| DIRETTORE SERVIZI TECNICO LOGISTICI | ing Cristiano Frizzele | Fondazione La Biennale di Venezia | COMMESSA | DATA | 27_01_22 | REDAZIONE | FAF | APPROVAZIONE |
| REDAZIONE | OGGETTO | Pad. Centrale_ Oscuramenti | TAVOLA | 04 | | | | |
| | LOCALIZZAZIONE | Padiglione Centrale | SCALA | | | | | |



Room 19-24
OS02_Applicazione pellicola filtro a porte TOT mq 25

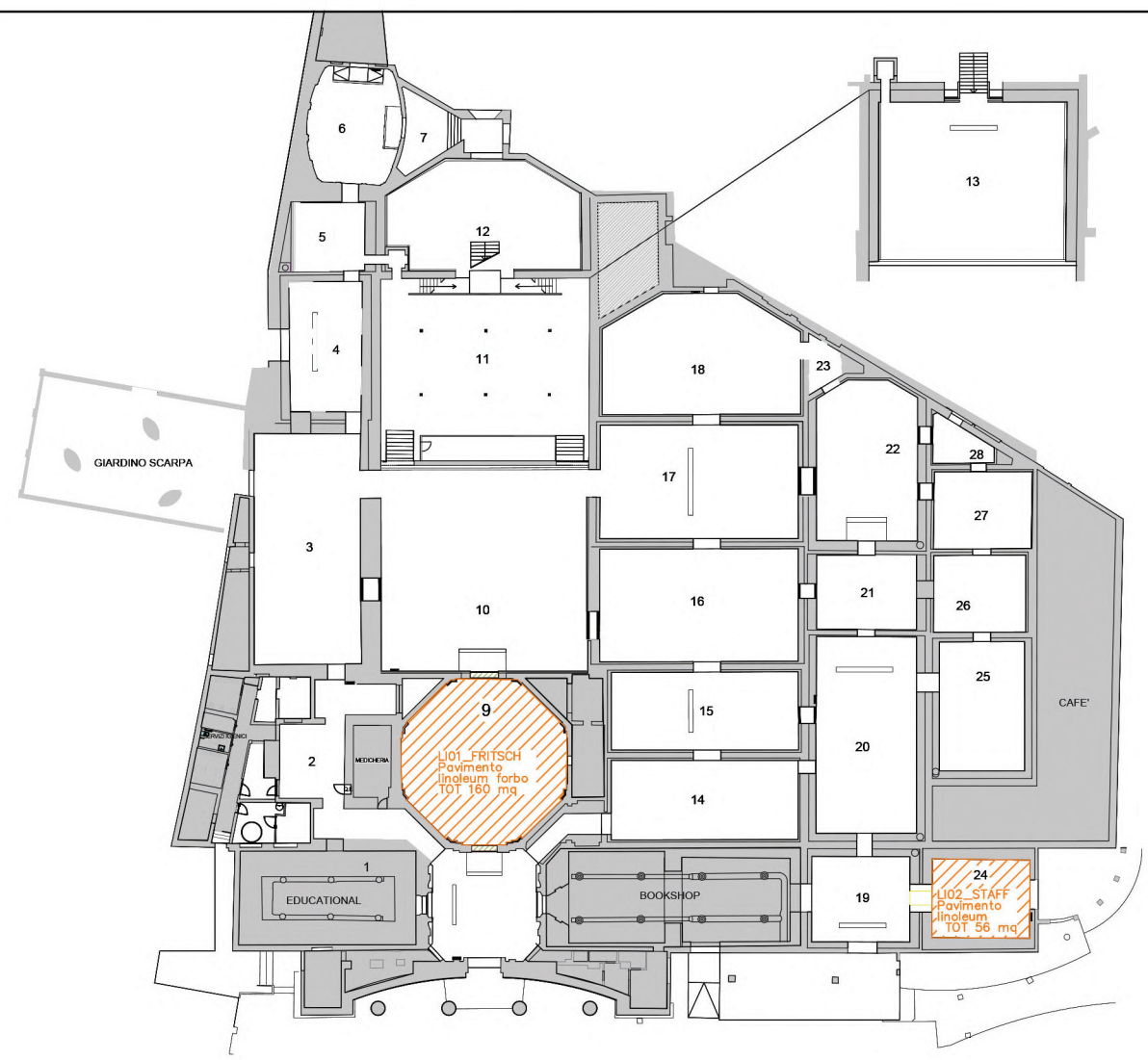
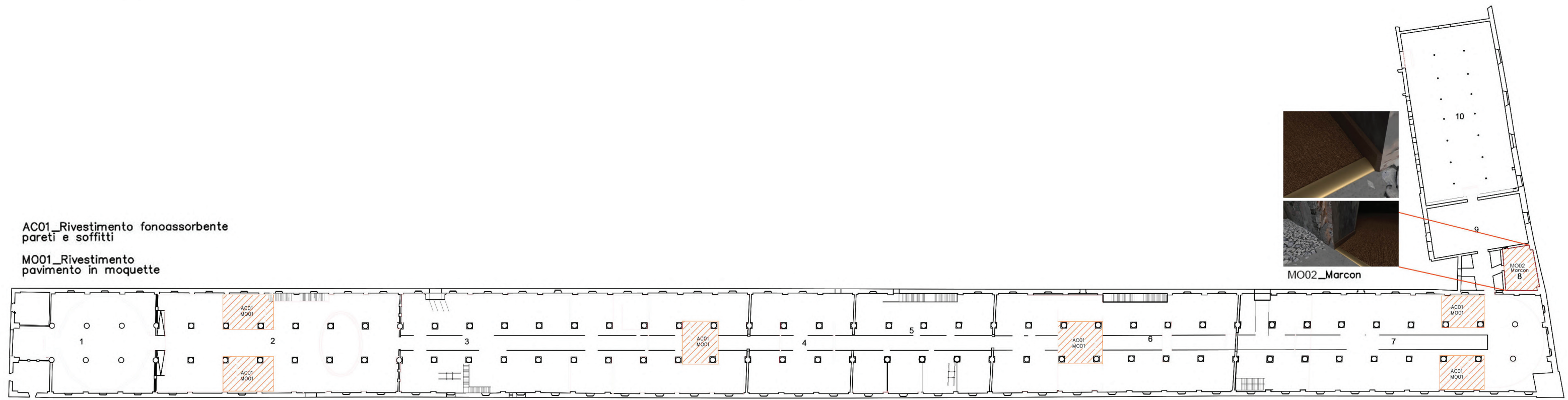
OS03_Oscuramento lucernario in
pellicola o tessuto TOT mq 240

OS03_Oscuramento lucernario sala
Chini room9 TOT mq 42

OS03_Applicazione pellicola filtrante
a lucernario TOT mq 405

OS02_Applicazione pellicola filtro a
porte TOT mq 25

| | | | | | |
|-------------------------------------|-----------------------------------|-----------|----------|-----------|--------------|
| DIRETTORE SERVIZI TECNICO LOGISTICI | | COMMESSA | DATA | REDAZIONE | APPROVAZIONE |
| ing Cristiano Frizzele | Fondazione La Biennale di Venezia | | 31_01_22 | FAF | |
| REDAZIONE | OGGETTO | TAVOLA | | | |
| | Rivestimenti/Finiture | 05 | | | |
| | LOCALIZZAZIONE | SCALA | | | |
| | Arsenale/Pad Centrale | | | | |



| | | | | | |
|-------------------------------------|-----------------------------------|-----------|----------|-----------|--------------|
| DIRETTORE SERVIZI TECNICI LOGISTICI | | COMMESSA | DATA | REDAZIONE | APPROVAZIONE |
| ing Cristiano Frizzele | Fondazione La Biennale di Venezia | | 31_01_22 | FAF | |
| REDAZIONE | OGGETTO | TAVOLA | | | |
| | S01_Pannelli Sospesi | 06 | | | |
| | LOCALIZZAZIONE | SCALA | | | |
| | Arsenale | | | | |

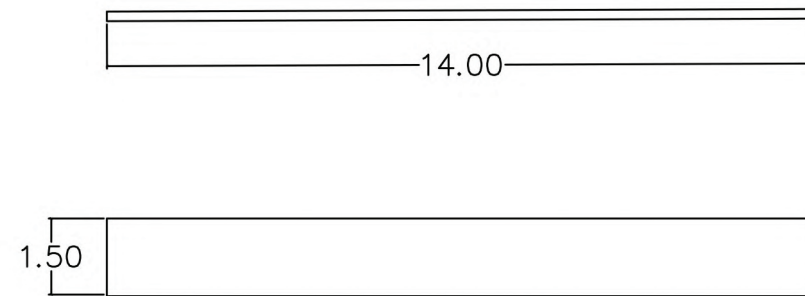
S01_Pannelli Sospesi

S01_PESSOA 2600xh216cm

Ars
room3

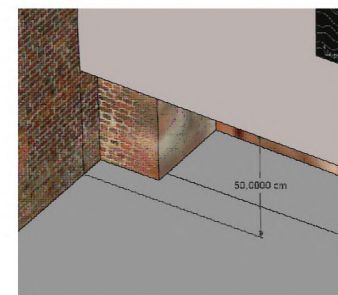
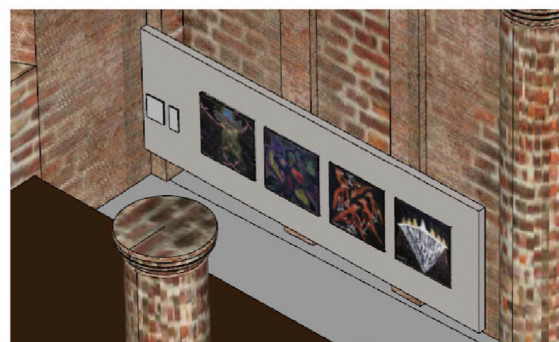
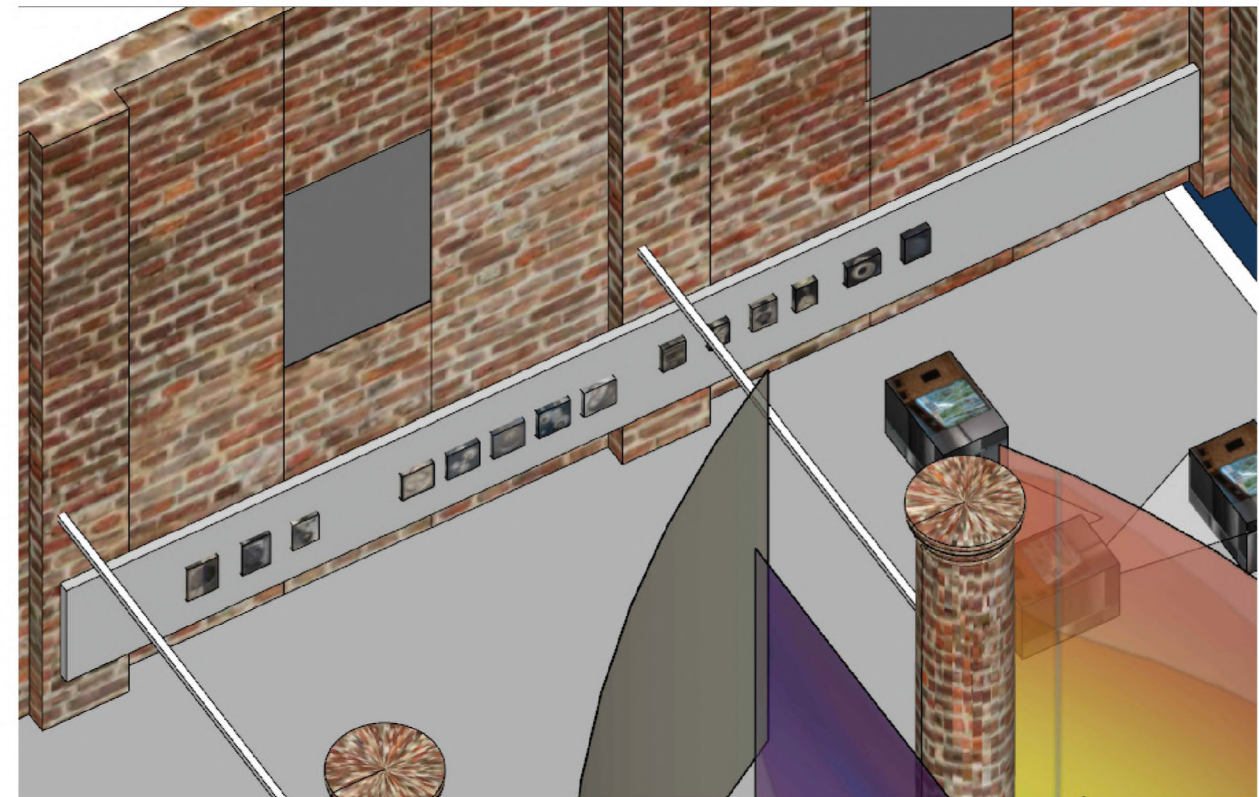
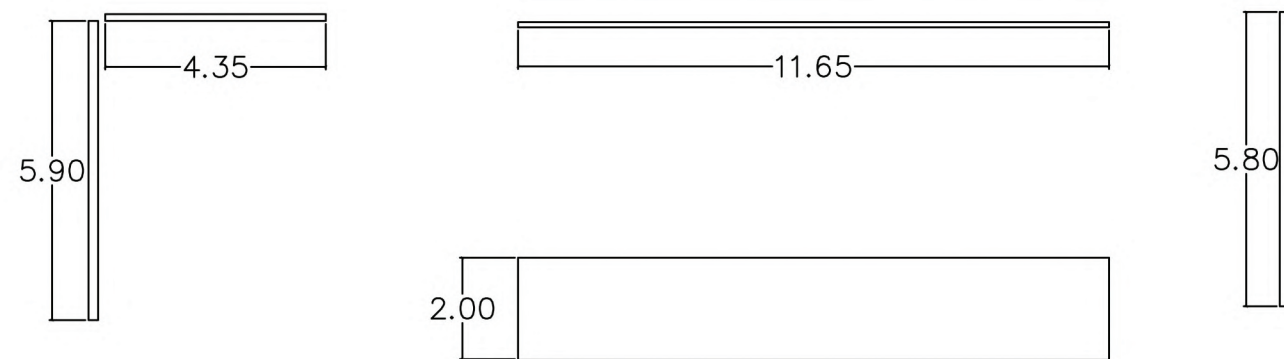
S01_IKEDA 1400Xh150cm

Ars
room5



S02_ESBEL Tot 30mlxh200cm

Ars
room3



Pannelli Sospesi
h da terra 50cm

| | | | | | |
|-------------------------------------|-----------------------------------|-----------|----------|-----------|--------------|
| DIRETTORE SERVIZI TECNICO LOGISTICI | | COMMESSA | DATA | REDAZIONE | APPROVAZIONE |
| ing Cristiano Frizzele | Fondazione La Biennale di Venezia | | 31_01_22 | FAF | |
| REDAZIONE | OGGETTO | TAVOLA | | | |
| | T02_SALAH | 07 | | | |
| | LOCALIZZAZIONE | SCALA | | | |
| | Arsenale_room3 | | | | |

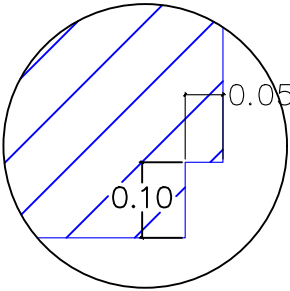
T02_EI–SALAH

Ars
room3

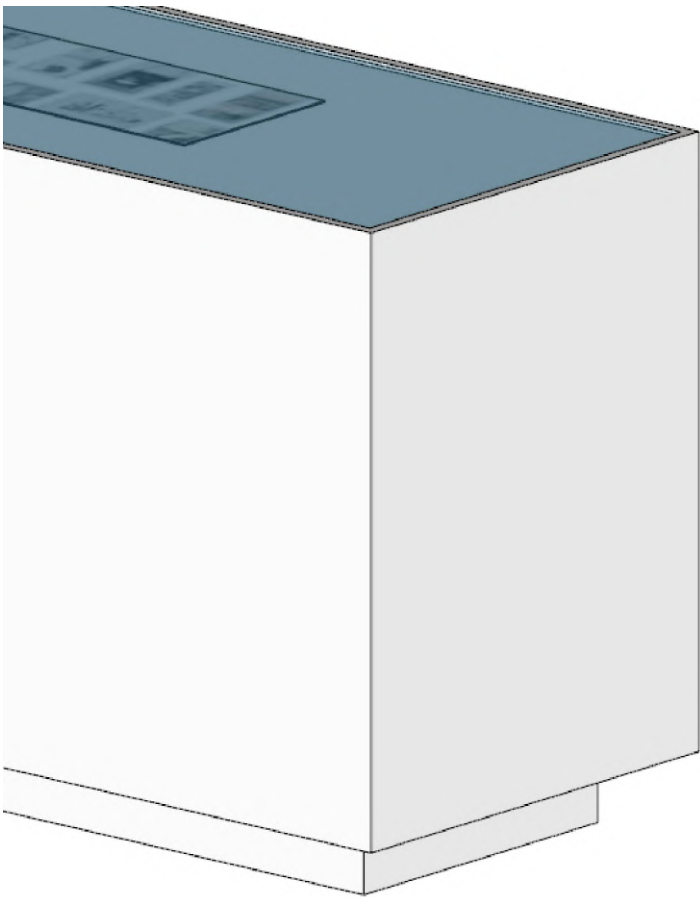
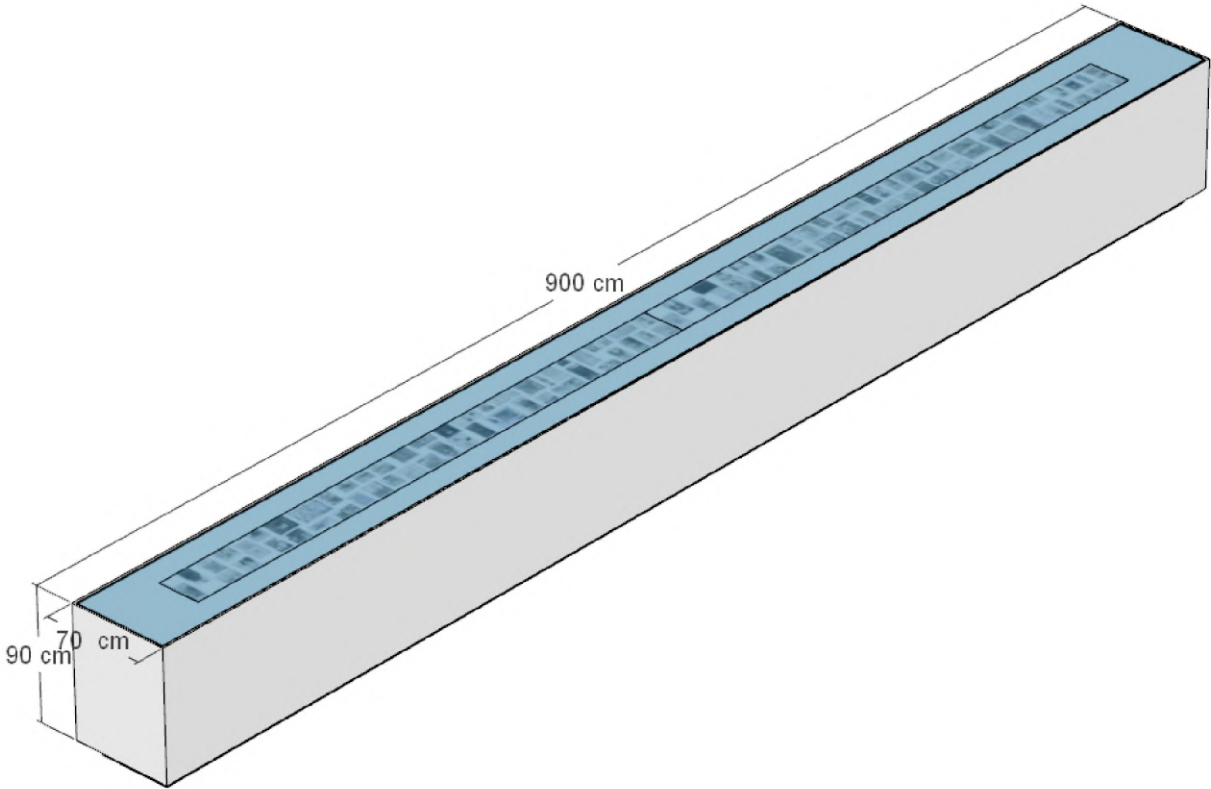
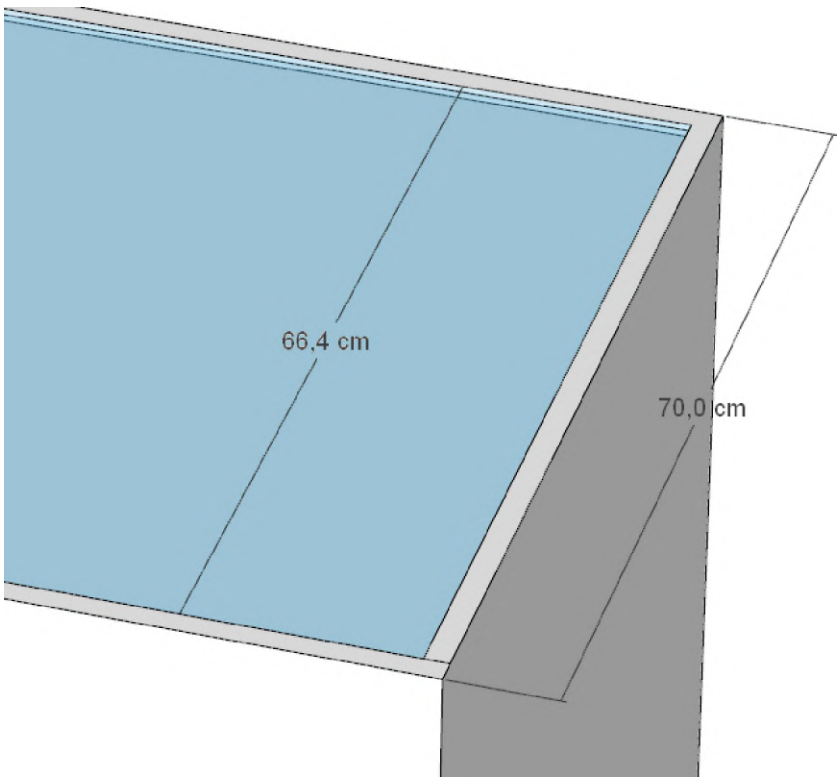
Vetrina
– h100x900x70 cm



Scuretto



Materiali
Colore

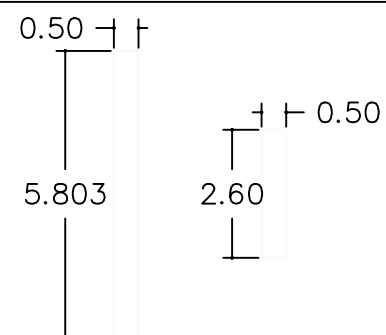


| | | | | | |
|-------------------------------------|-----------------------------------|-----------|----------|-----------|--------------|
| DIRETTORE SERVIZI TECNICO LOGISTICI | | COMMESSA | DATA | REDAZIONE | APPROVAZIONE |
| ing Cristiano Frizzele | Fondazione La Biennale di Venezia | | 27_01_22 | FAF | |
| REDAZIONE | OGGETTO | TAVOLA | | | |
| | T03_Ovartaci | 08 | | | |
| | LOCALIZZAZIONE | SCALA | | | |
| | Pad Centrale_room 5 | | | | |

T03_OVARTACI

Pad
room5

T03b_OVARTACI



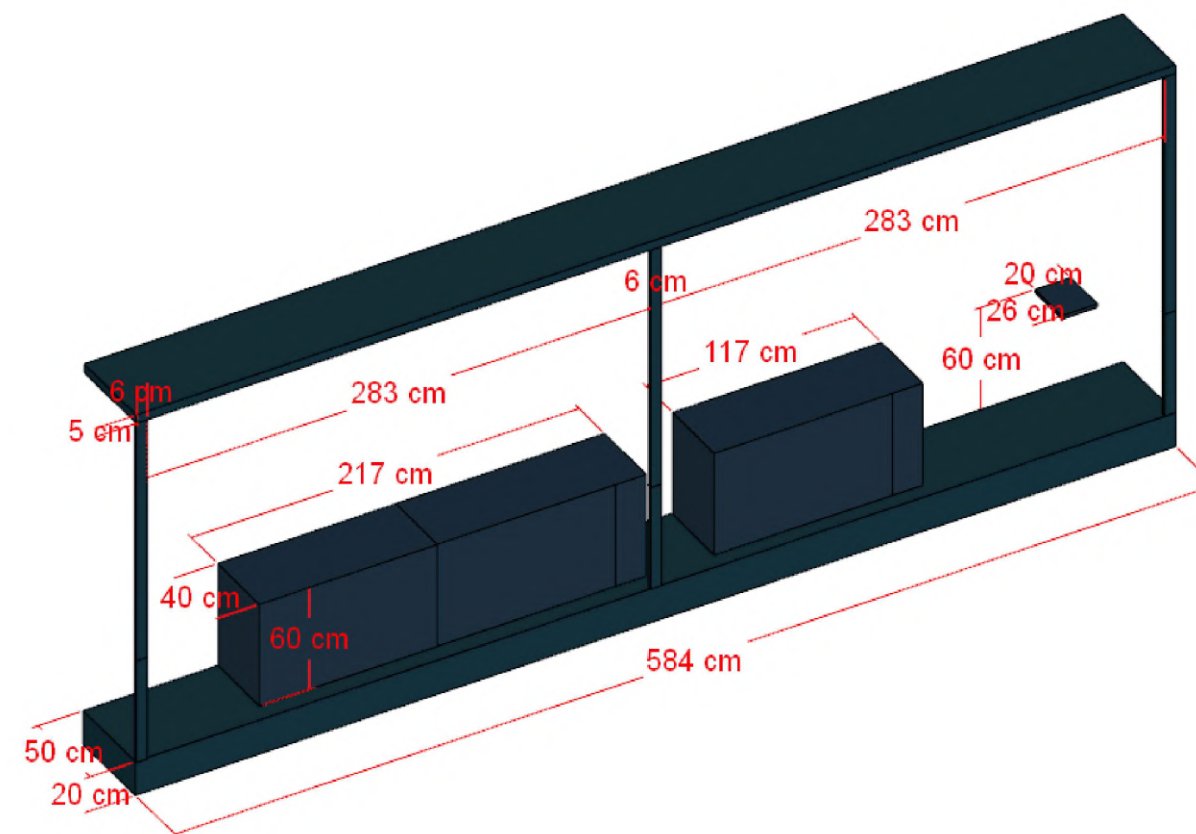
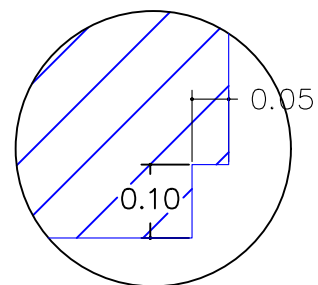
T03a_OVARTACI

TECA SELF STANDING
— h230x260x50cm

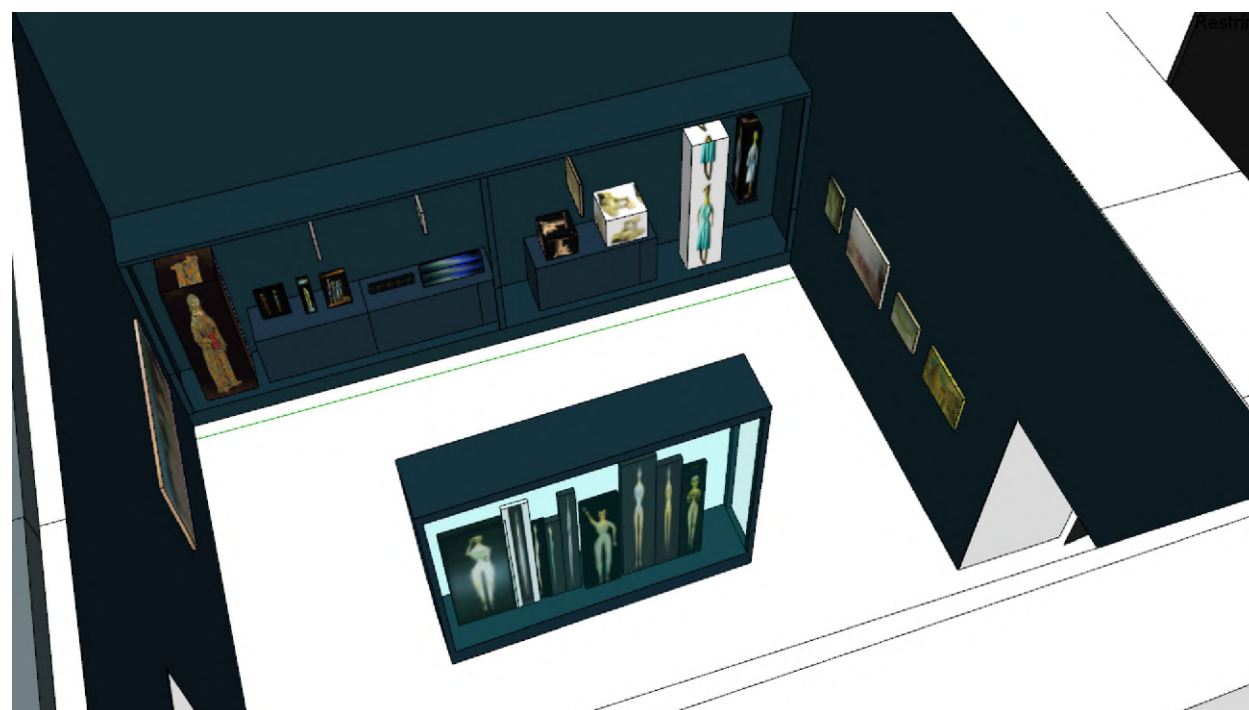
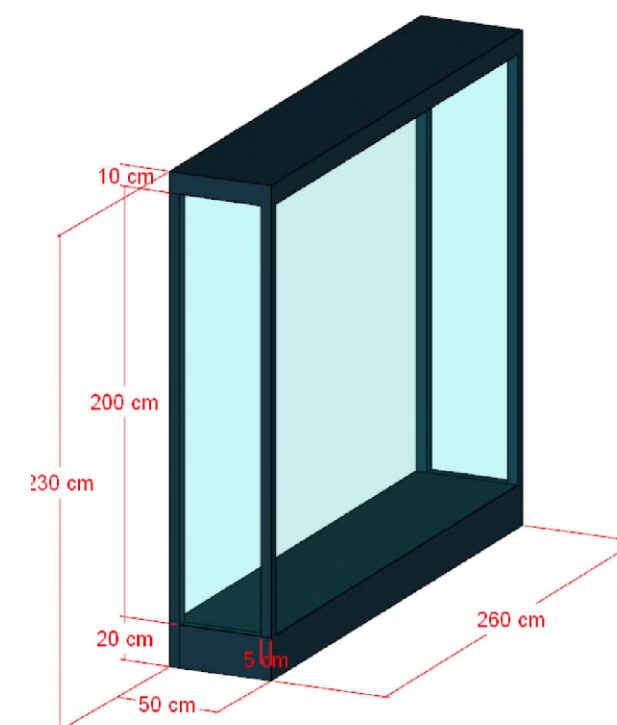
T03b_OVARTACI

TECA
— h230x583x50cm
—
pedistalli interni
— n°3 h60x120x40cm
— mensola sp2x26x20cm

Scuretto



T03a_OVARTACI



ing Cristiano Frizzele

Fondazione La Biennale di Venezia

REDAZIONE

OGGETTO

T04_Hill

TAVOLA

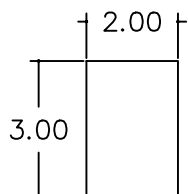
09

LOCALIZZAZIONE

Pad Centrale_room 2

SCALA

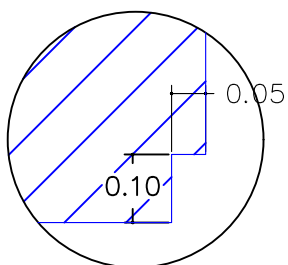
T04_HILL

Pad
room2

Base

— h70x200x300 cm

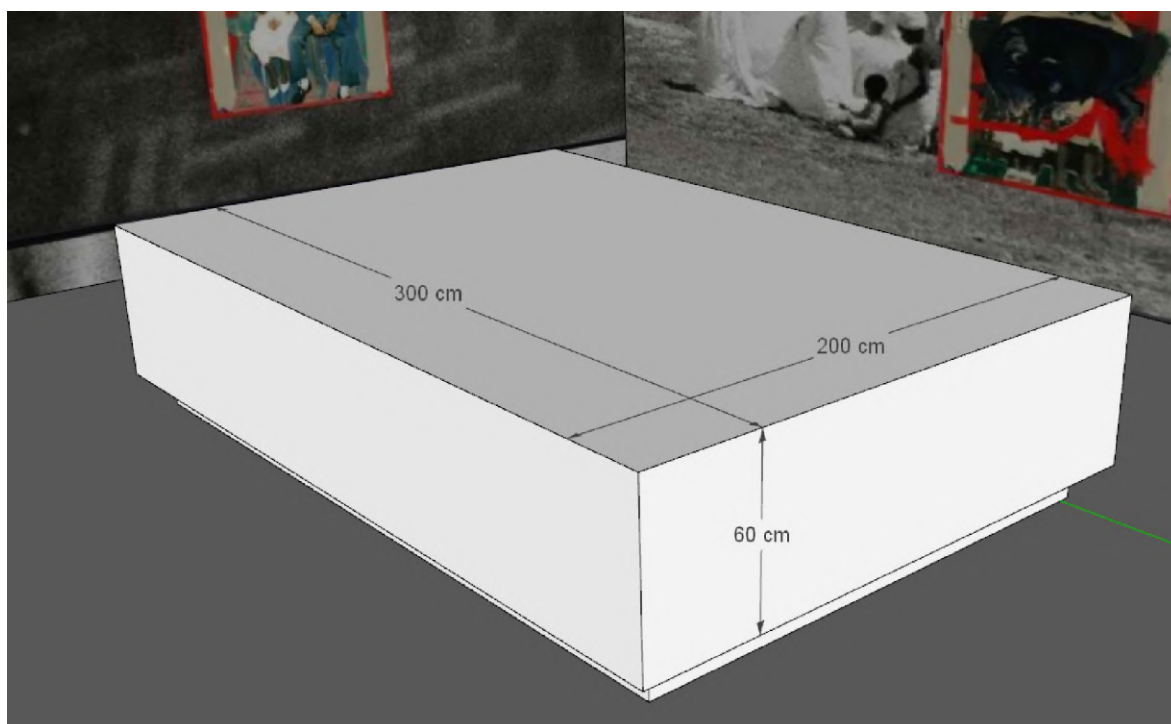
Scuretto



T04_HILL

Teca

— h50x100x200 cm

Materiali
Colore

ing Cristiano Frizzele

Fondazione La Biennale di Venezia

REDAZIONE

OGGETTO

T05_Rego

TAVOLA

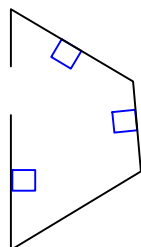
10

LOCALIZZAZIONE

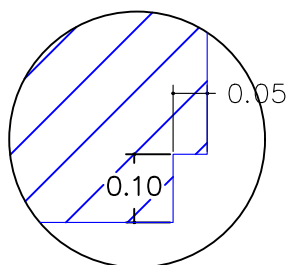
Pad Centrale_room 23

SCALA

T05_REGO

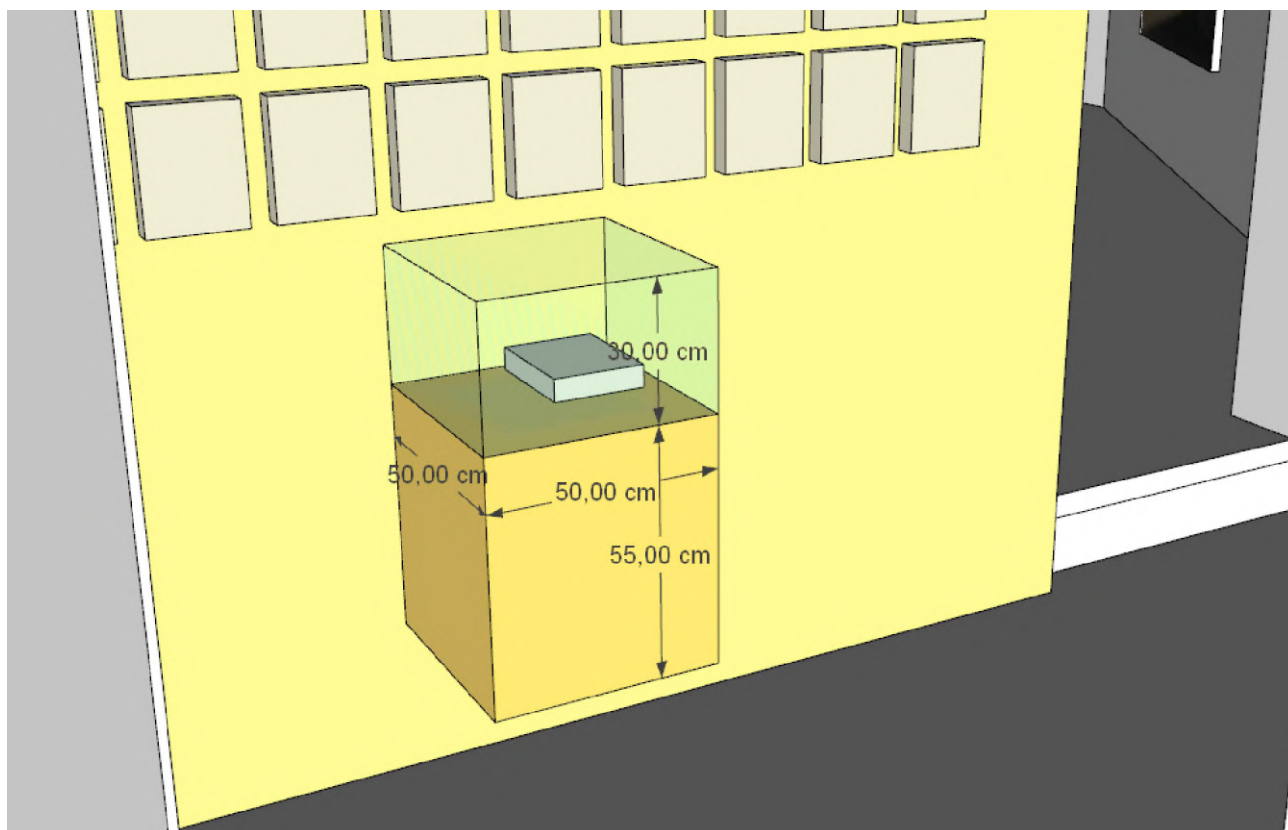
Pad
room23

Scuretto



T05_REGO

- Struttura appesa parete
h55x50x50cm
- Teche n°3
h30x50x50cm



ing Cristiano Frizzele

Fondazione La Biennale di Venezia

REDAZIONE

OGGETTO

B01_LEIGH

TAVOLA

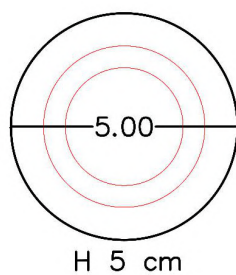
11

LOCALIZZAZIONE

Arsenale_room1

SCALA

B01_LEIGH

Ars
room1

B01_LEIGH

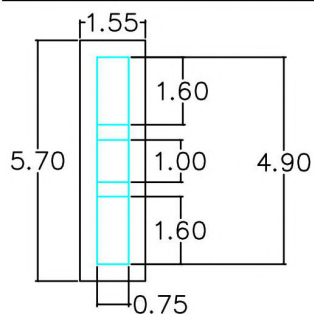
Base

— h5xDiametro 500cm

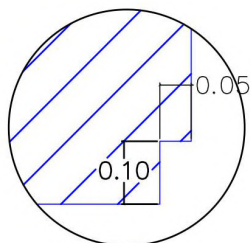


B02_ODUNDO
T01_ODUNDO

Ars
room2



Scuretto



T01_ODUNDO

Plinto in mdf

– h110x490x75 cm

Teche in plexiglass

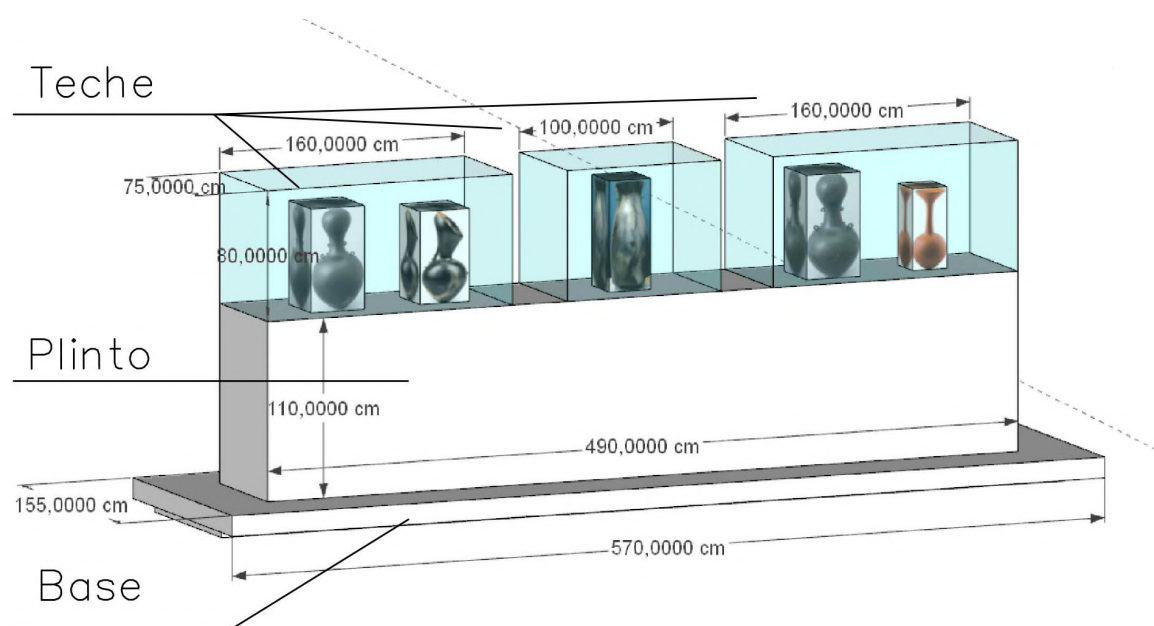
– n°2 h80x160x75 cm

– n°1 h80x100x75 cm

B02_ODUNDO

Base in mdf

– h20x570x155 cm



ing Cristiano Frizzele

Fondazione La Biennale di Venezia

REDAZIONE

OGGETTO

B03_ASAWA

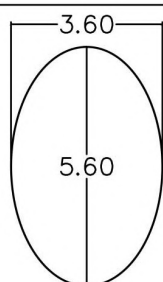
TAVOLA

13

LOCALIZZAZIONE

Arsenale_room2_CAPSULA VESSEL

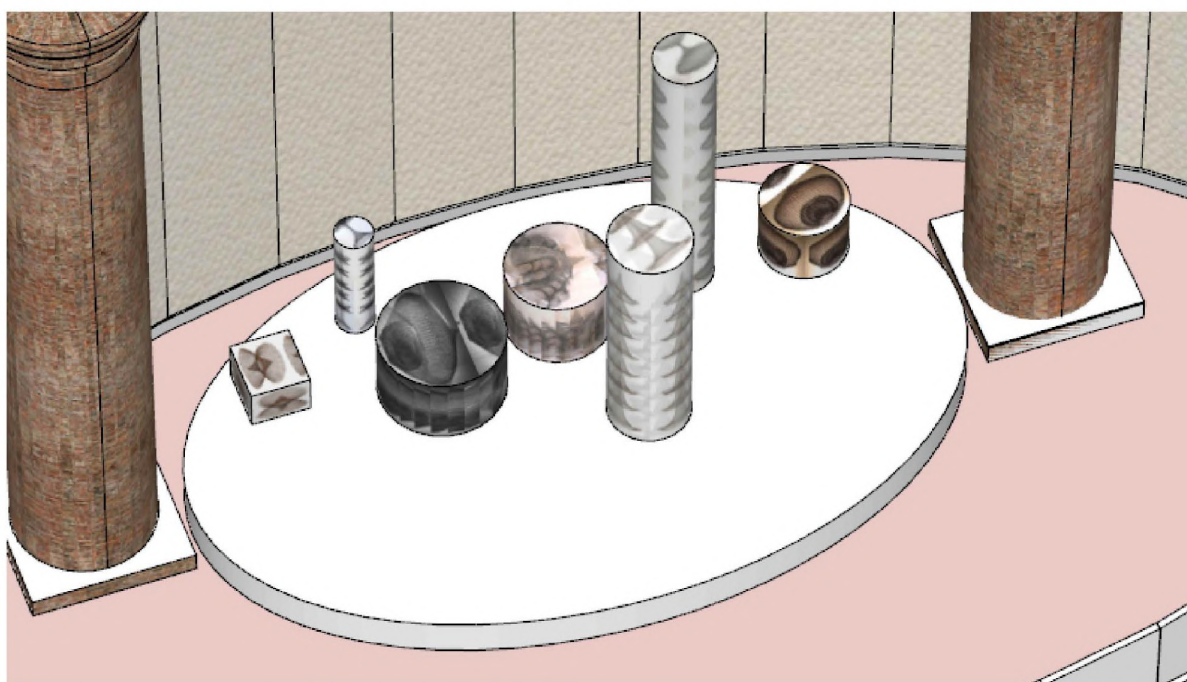
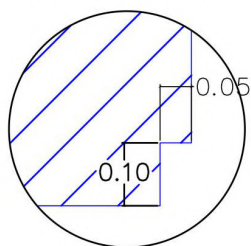
SCALA

CAPSULA 4
B03_ASAWAArs
room2

B03_ASAWA

Base in mdf
– h30x560x360 cm

Scuretto



ing Cristiano Frizzele

Fondazione La Biennale di Venezia

REDAZIONE

OGGETTO

B04_TALBOT

TAVOLA

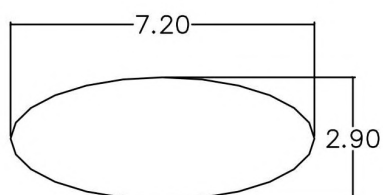
14

LOCALIZZAZIONE

Arsenale_room3

SCALA

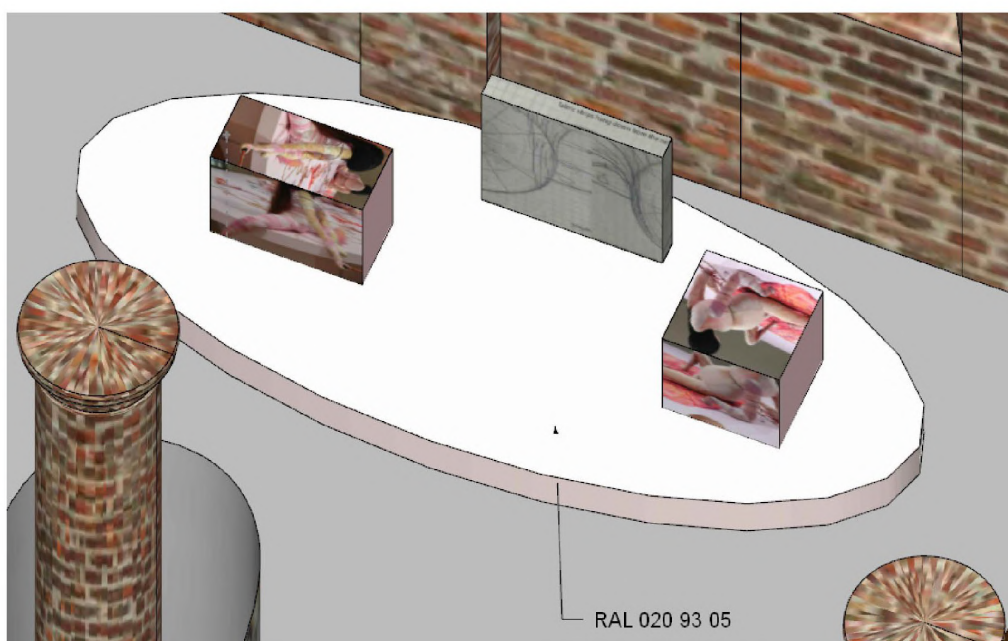
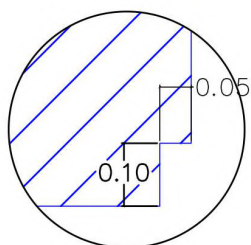
B04_TALBOT

Ars
room3

B04_TALBOT

Base in mdf
– h50x720x290 cm

Scuretto



RAL 020 93 05

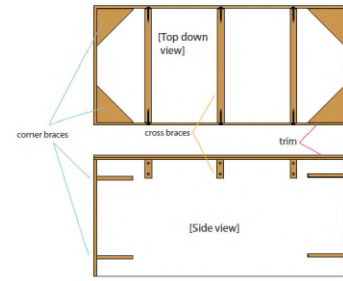
| | | | | | |
|-------------------------------------|-----------------------------------|-----------|----------|-----------|--------------|
| DIRETTORE SERVIZI TECNICO LOGISTICI | | COMMESSA | DATA | REDAZIONE | APPROVAZIONE |
| ing Cristiano Frizzele | Fondazione La Biennale di Venezia | | 31_01_22 | FAF | |
| REDAZIONE | OGGETTO | TAVOLA | | | |
| | B05_LIN | 15 | | | |
| | LOCALIZZAZIONE | SCALA | | | |
| | Arsenale_room3 | | | | |

B05_LIN

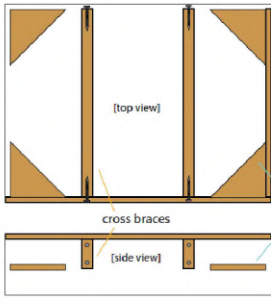
Ars
room3

Base

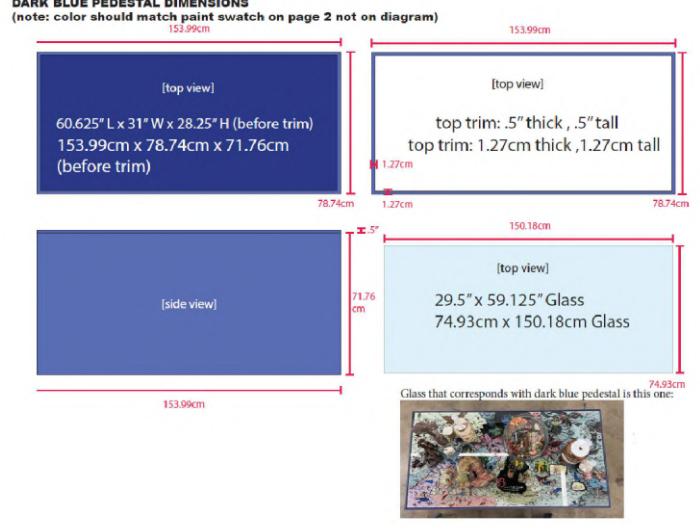
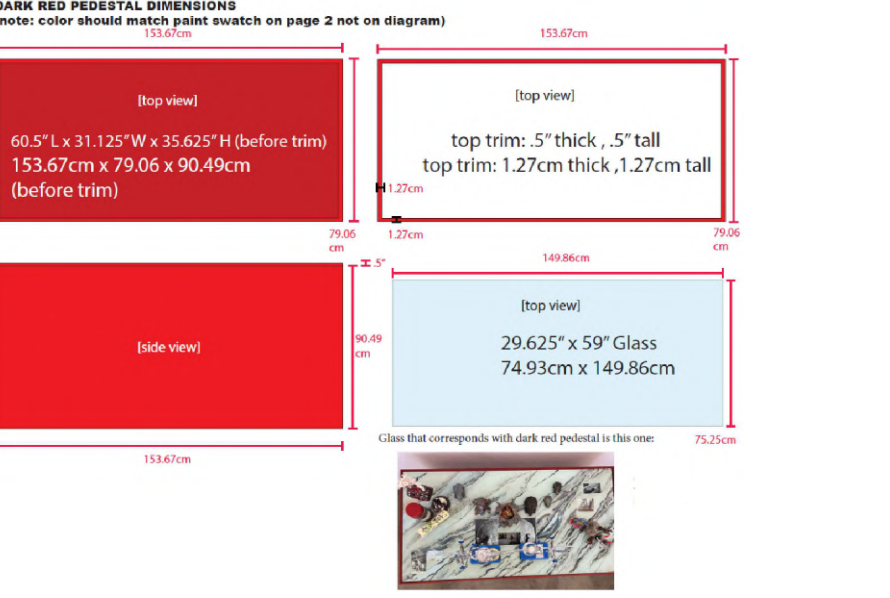
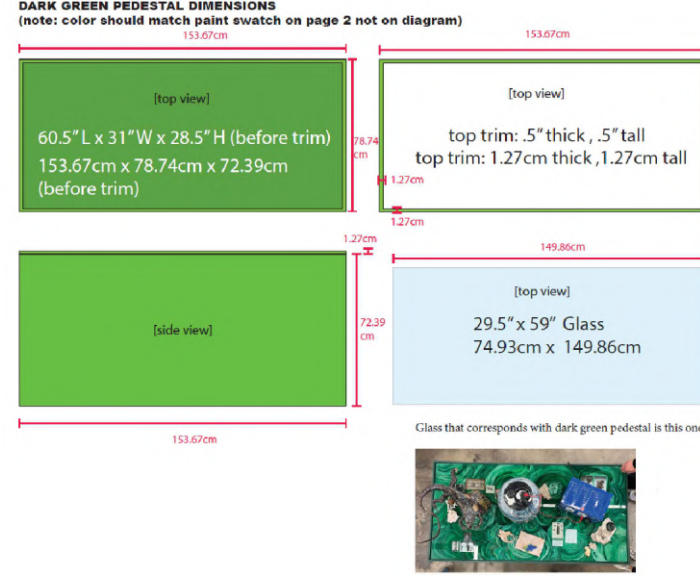
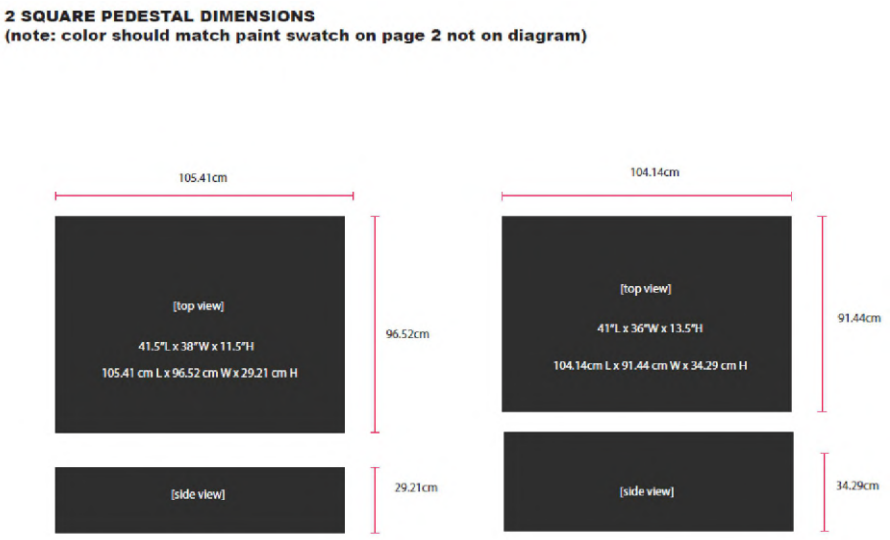
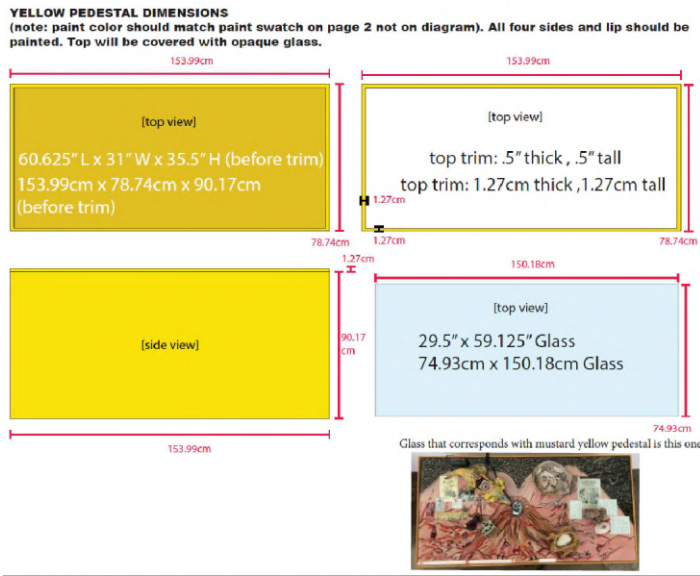
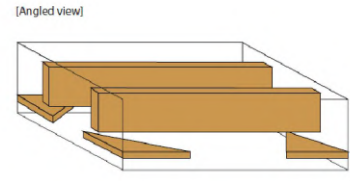
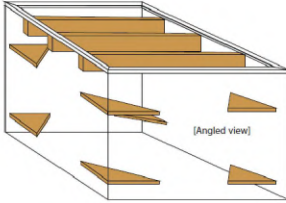
- h90.17x153.99x78.7cm (giallo)
- h72.39x153.67x78.7cm (verde)
- h90.49x153.67x79.06cm (rosso)
- h71.76x153.99x78.7cm (blu)
- h29.21x105.1x95.51
- h34.21x104.14x91.44



Struttura basi rettangolari



Struttura basi quadrate



ing Cristiano Frizzele

Fondazione La Biennale di Venezia

REDAZIONE

OGGETTO

B06_CHERRI

TAVOLA

16

LOCALIZZAZIONE

Arsenale_room3

SCALA

B06_CHERRI

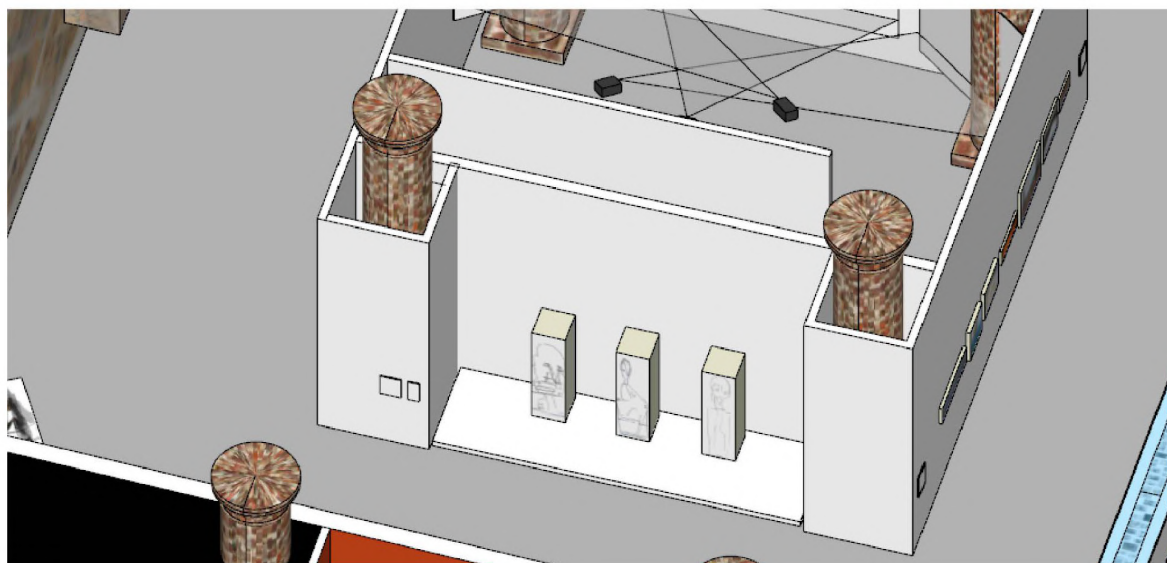
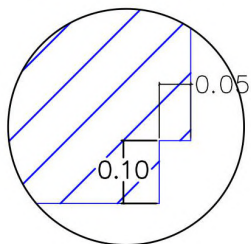
*misure da confermare
post rilievoArs
room3


B06_CHERRI

Base

— h20x547x150 cm

Scuretto

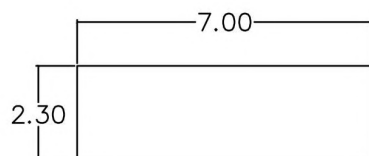


| | | | |
|-------------------------------------|--|---------------------|--|
| DIRETTORE SERVIZI TECNICO LOGISTICI | | COMMESSA |  la Biennale di Venezia Arte Architettura Cinema Danza Musica Teatro Archivio Storico |
| ing Cristiano Frizzele | Fondazione La Biennale di Venezia | | |
| REDAZIONE | OGGETTO B07_HORN | TAVOLA 17 | |
| | LOCALIZZAZIONE Arsenale_room4_CAPSULA CYBORG | SCALA | |

CAPSULA5
B07_HORN

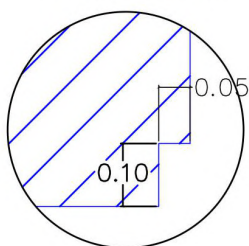
Ars
room4

B07_HORN

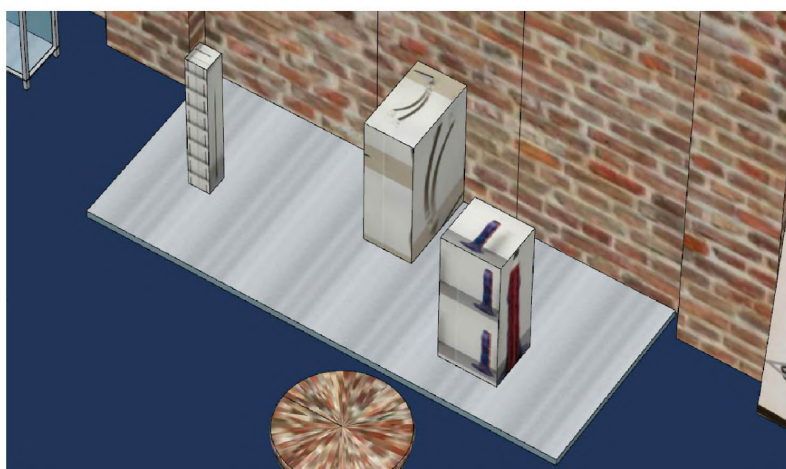



Base
— h20x700x230 cm

Scuretto



Materiali: mdf
Colore: Finitura Lastra INOX

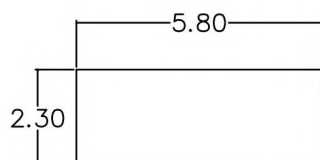


| | | | |
|-------------------------------------|--|---------------------|--|
| DIRETTORE SERVIZI TECNICO LOGISTICI | | COMMESSA |  la Biennale di Venezia Arte Architettura Cinema Danza Musica Teatro Archivio Storico |
| ing Cristiano Frizzele | Fondazione La Biennale di Venezia | | |
| REDAZIONE | OGGETTO B08_LIJN | TAVOLA 18 | |
| | LOCALIZZAZIONE Arsenale_room4_CAPSULA CYBORG | SCALA | |

CAPSULA5
B08_LIJN

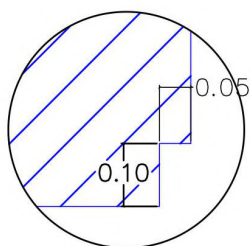
Ars
room4

B08_LIJN

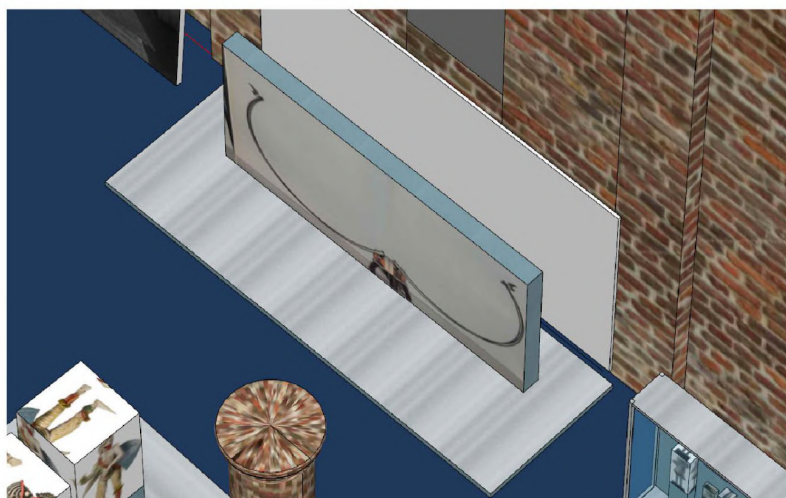


Base
— h20x230x580 cm

Scuretto



Materiali: mdf
Colore: Finitura Lastra INOX



ing Cristiano Frizzele

Fondazione La Biennale di Venezia

REDAZIONE

OGGETTO

B09_SCHULZ

TAVOLA

19

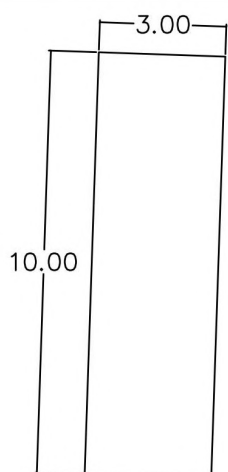
LOCALIZZAZIONE

Arsenale_room4_CAPSULA CYBORG

SCALA

CAPSULA5
B09_SCHULZ

Ars
room4



B09_SCHULZ

Base

— h20x1000x300 cm

Materiali: mdf

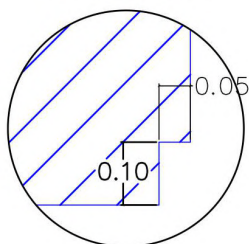
Colore: Finitura Lastra INOX

Plinti N°9

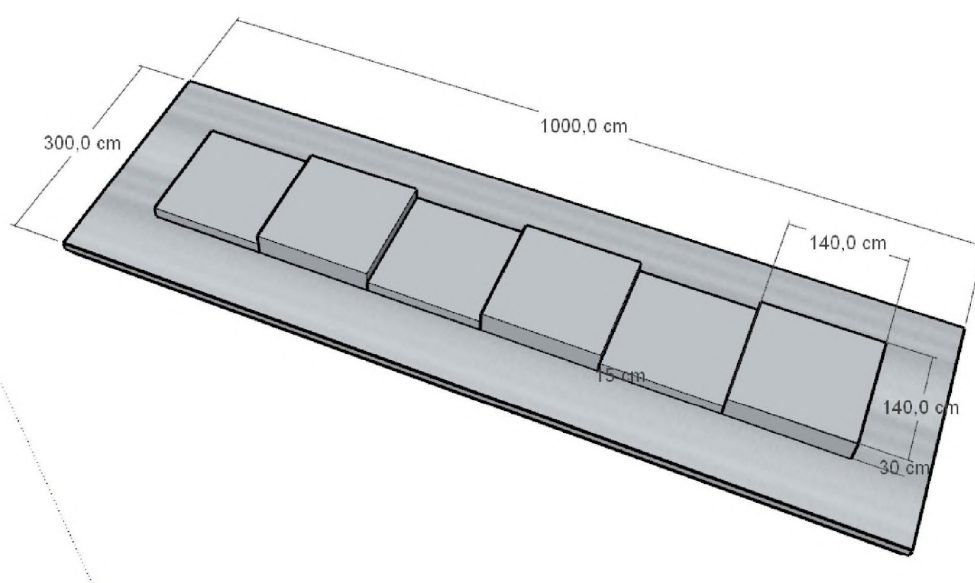
Scuretto


— N°3 h30x140x140

— N°3 h15x140x140



Materiali mdf dipinto

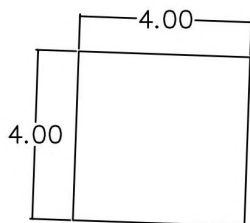


| | | | |
|-------------------------------------|-----------------------------------|-----------|--|
| DIRETTORE SERVIZI TECNICO LOGISTICI | | COMMESSA |  la Biennale di Venezia Arte Architettura Cinema Danza Musica Teatro Archivio Storico |
| ing Cristiano Frizzele | Fondazione La Biennale di Venezia | | |
| REDAZIONE | OGGETTO | TAVOLA | |
| | B11_FAN | 21 | |
| | LOCALIZZAZIONE | SCALA | |
| | Arsenale_room5 | | |

B11_FAN

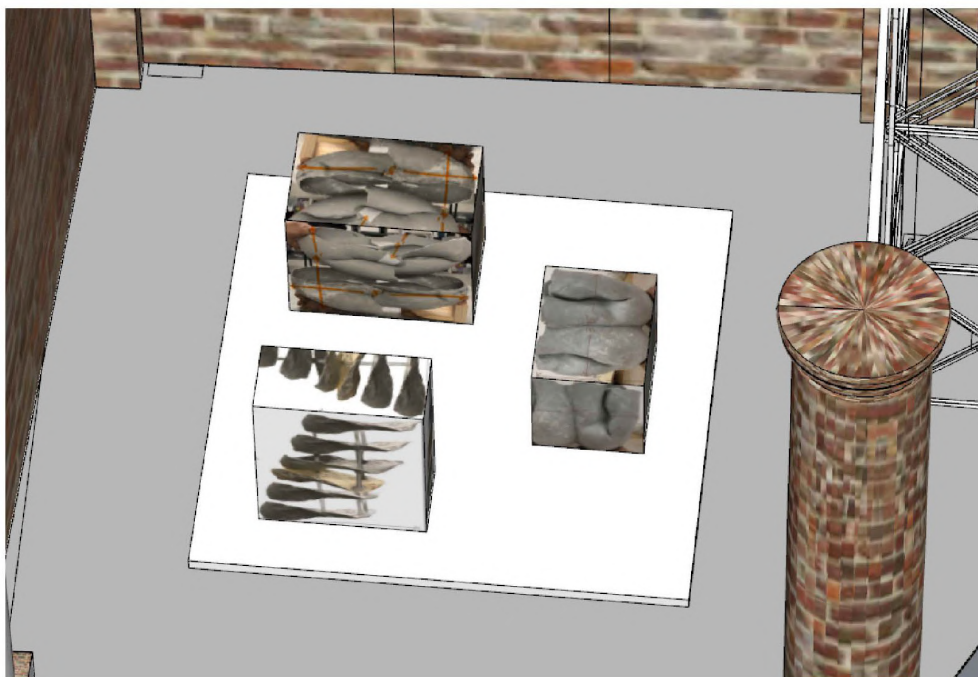
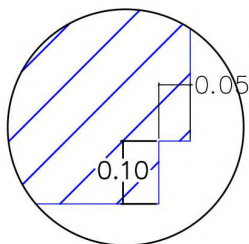
Ars
room5

B11_FAN



Base
— h20x400x400

Scuretto



ing Cristiano Frizzele

Fondazione La Biennale di Venezia

REDAZIONE

OGGETTO

B12_SOLAR

TAVOLA

22

LOCALIZZAZIONE

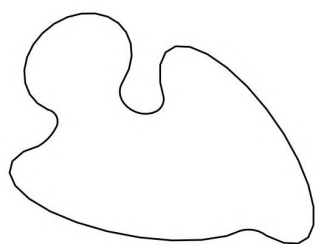
Arsenale_room6

SCALA

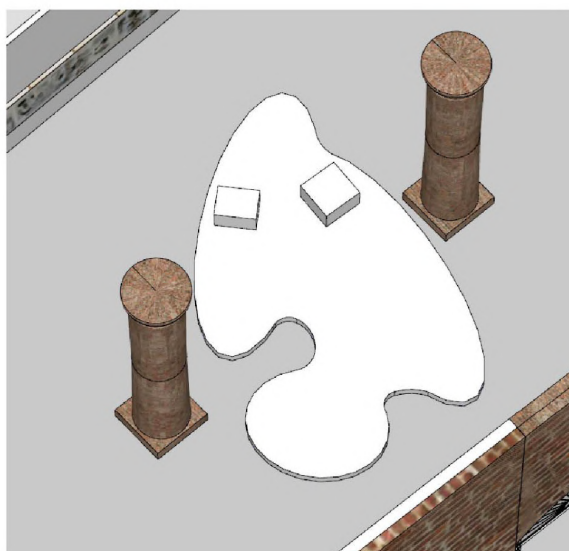
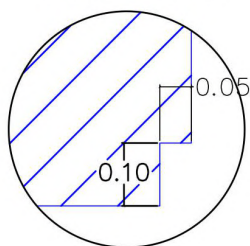
B12_SOLAR


Ars
room6

B12_SOLAR

Base
— h20x785x500 cm

Scuretto



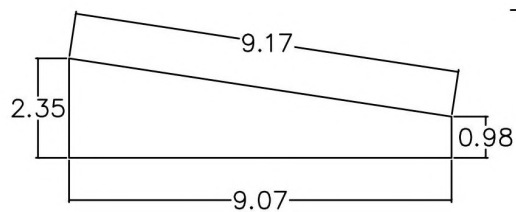
| | | | |
|-------------------------------------|---|-----------|--|
| DIRETTORE SERVIZI TECNICI LOGISTICI | | COMMESSA |  la Biennale di Venezia Arte Architettura Cinema Danza Musica Teatro Archivio Storico |
| ing Cristiano Frizzele | Fondazione La Biennale di Venezia | TAVOLA | |
| REDAZIONE | OGGETTO B13_KUDO | 23 | |
| | LOCALIZZAZIONE Arsenale_room6 | SCALA | |

B13_KUDO

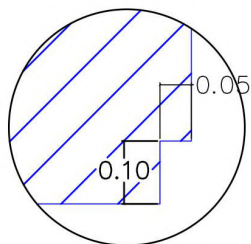
Ars
room6


B13_KUDO

Base



Scuretto

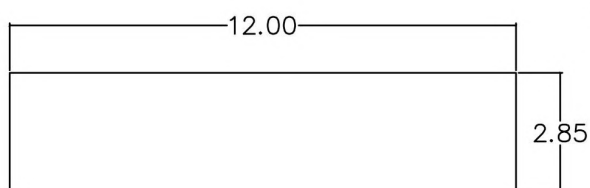


| | | | |
|-------------------------------------|-----------------------------------|-----------|--|
| DIRETTORE SERVIZI TECNICI LOGISTICI | | COMMESSA |  la Biennale di Venezia Arte Architettura Cinema Danza Musica Teatro Archivio Storico |
| ing Cristiano Frizzele | Fondazione La Biennale di Venezia | | |
| REDAZIONE | OGGETTO | TAVOLA | |
| | B14_VOGEL | 24 | |
| | LOCALIZZAZIONE | SCALA | |
| | Arsenale_room6 | | |

B14_VOGEL

Ars
room6

B14_VOGEL



Base
— h20x1200x285 cm

Scuretto

